

Catalogue of the Rauma Maritime Cluster businesses

2019 New edition



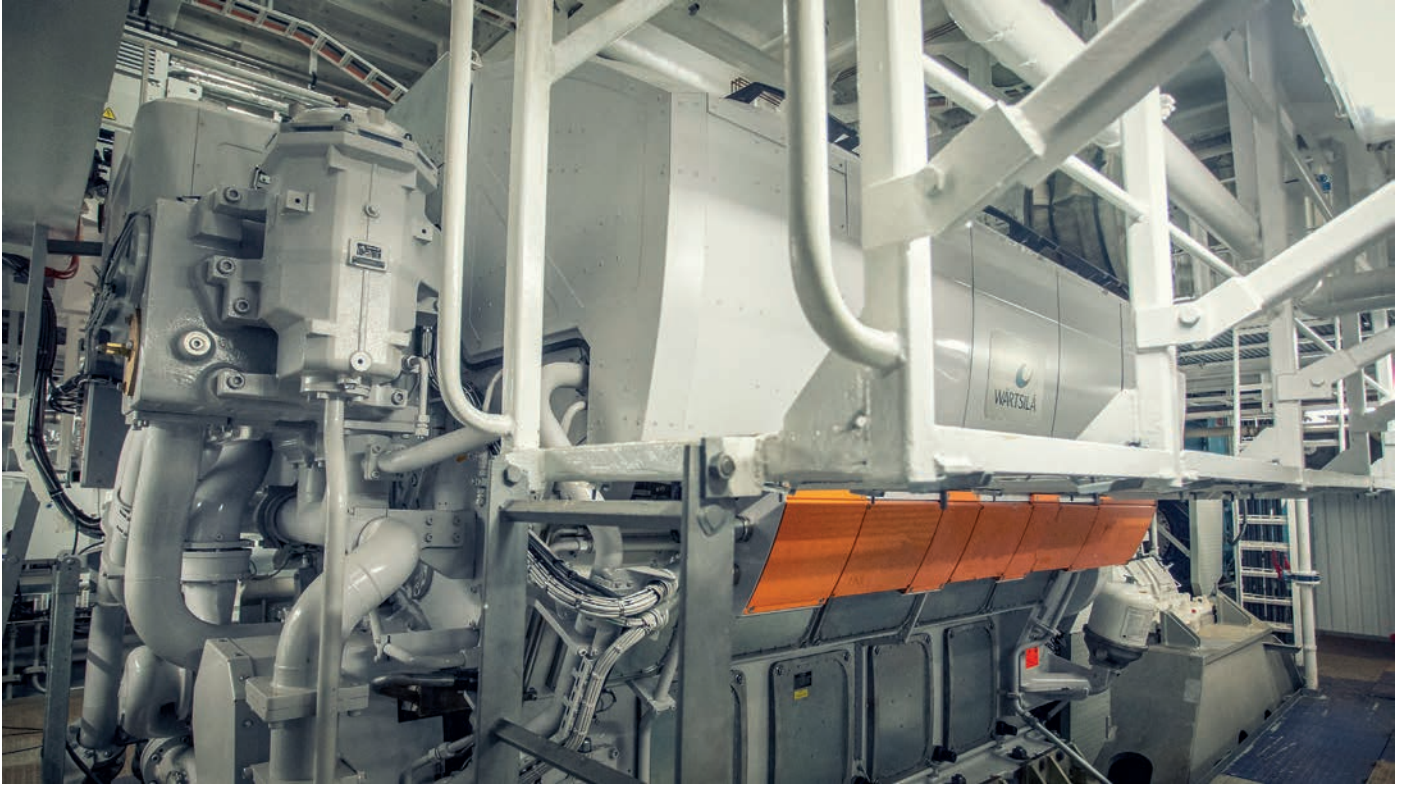
Rauma Maritime Cluster
Catalogue of the Rauma Maritime Cluster businesses
2019 New edition

Catalogue design group:
Heikki M. Nurmi
Iiro Laine
Jukka Mäkelä

Publisher: Rauma City Development
Layout: Jukka Mäkelä
Printed at: Laine Direct Oy, Rauma
2019

Catalogue of the Rauma Maritime Cluster businesses

2019 New edition



Contents

Rauma maritime cluster - Modern and versatile.....	5
Maritime Industry.....	6
Maritime Transport.....	27
Port Operations.....	32
Public Sector.....	39



manufacturers. The park is a significant investment in the future for the city of Rauma. After five years running, the area houses around 30 companies collaborating with each other. Their location in the industrial park gives them a competitive edge and promotes networking.

Between the years 2014 and 2016 the Business Services of the City of Rauma ran the Rauma subproject of Turku Seas 2020 project which was part of the Meri programme by the Ministry of Economic Affairs and Employment. The aim of the project was to develop the operative environment of the companies belonging to the maritime cluster in Rauma, promote networking among these companies and support their marketing efforts.

The first catalogue of maritime cluster companies in Rauma was compiled as part of the Turku Seas 2020 subproject. The current, updated version has been put together by Rauma City Development. The need for this catalogue was generated by the changes in the marine industry's operational environment that call for effective marketing and constant presentation of expertise and client references by the companies.

Rauma is home to almost 80 marine industry companies, maritime transport companies, port operators or central public actors belonging to the maritime cluster. This catalogue presents 64 of these maritime cluster operators. In addition to maritime industry companies, Rauma has a significant number of companies that operate in areas of business close to the maritime cluster.

On behalf of the people behind this catalogue we would like to thank in particular the companies that present themselves in the catalogue.

Rauma maritime cluster

– Modern and versatile

Seafaring, craftsmanship and trading boosted the early development of the city of Rauma, founded in 1442. The central motors driving the development of the city's economic life were the Age of Sail in the 1800's, the industrial turning point at the beginning of the 20th century powered by the emergence of the sawmill industry and the expansion of shipbuilding and other metal industries.

Rauma has its industrial roots deep in the marine, metal and forest industries. Advanced subcontractor networks, sea transports, port operations and other logistics functions speed up the progress. As the companies' needs have changed, the importance of know-how and education has increased which is why Rauma has provided more possibilities for learning institutions to get involved.

Changes in the local marine and shipbuilding industries allowed for the establishment of Seaside Industry Park Rauma, an industrial park for heavy machinery



KARI KOSKI
Mayor

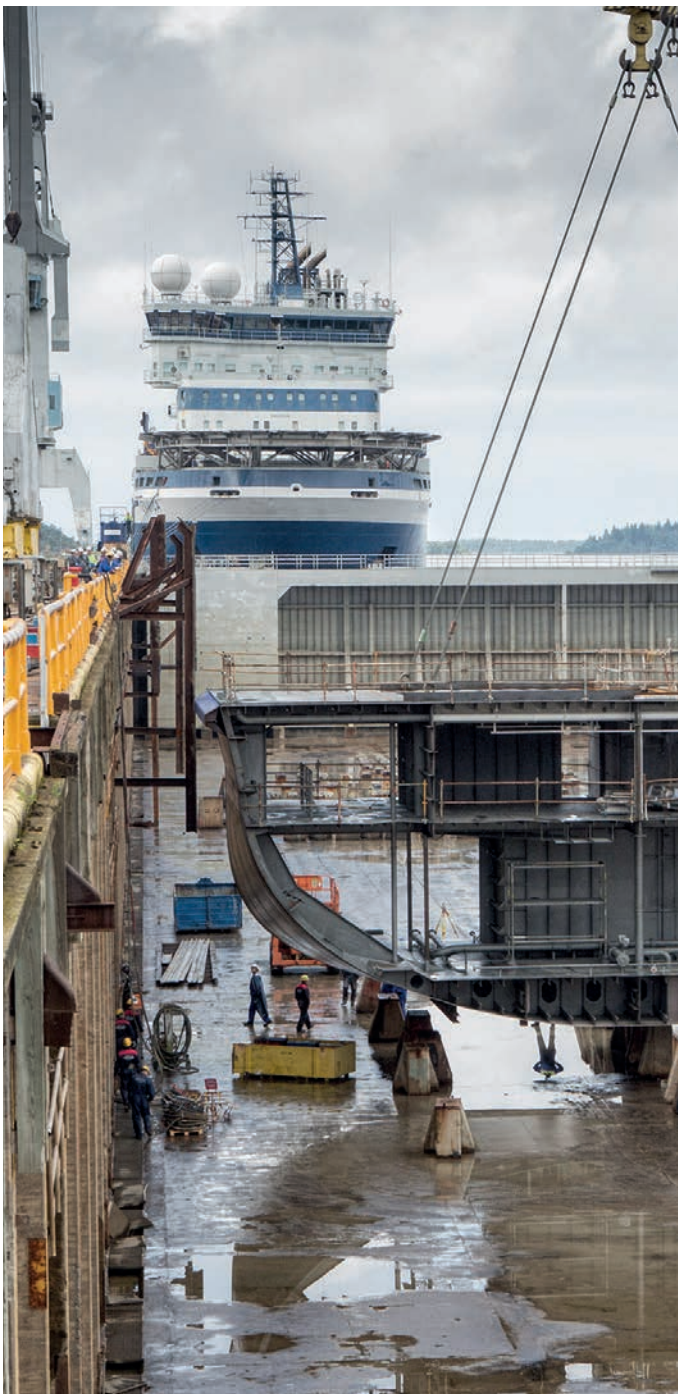


HEIKKI M. NURMI
Business Development Specialist

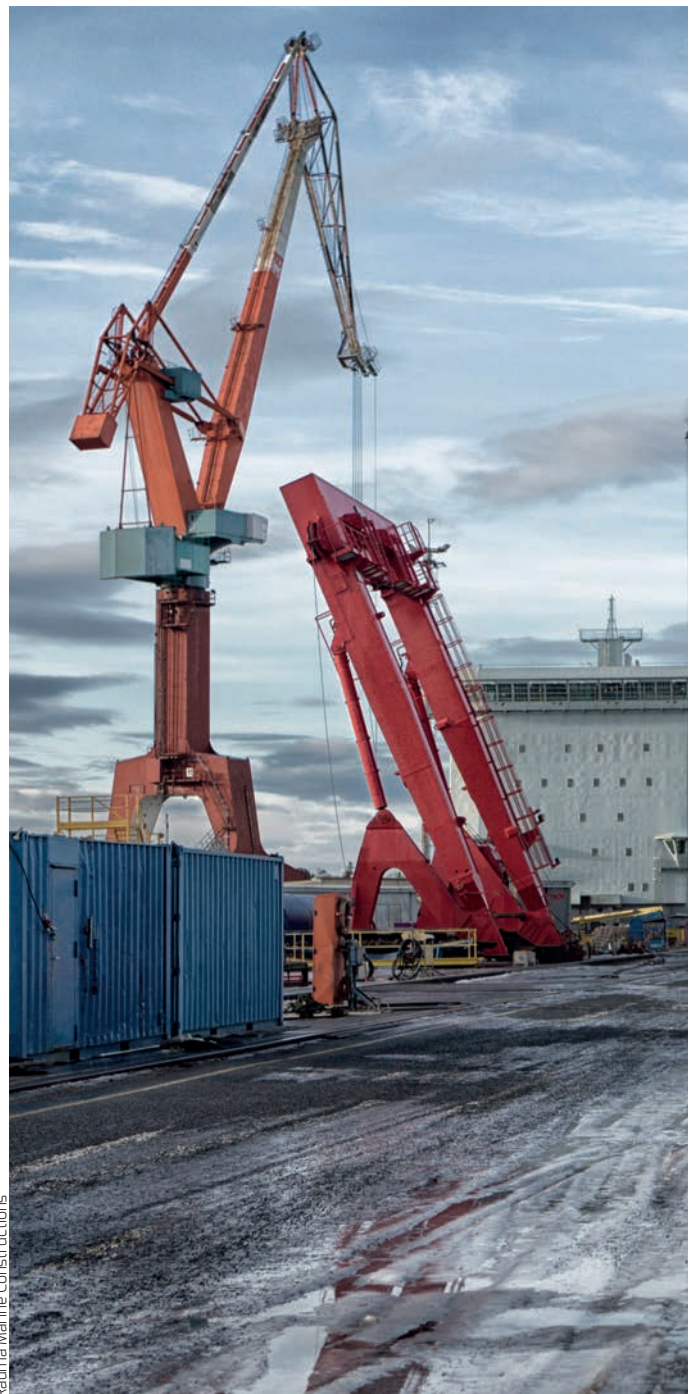


MARITIME INDUSTRY

MARITIME INDUSTRY TURNKEY AND PART SUPPLIERS,
SHIPS AND OFFSHORE STRUCTURES,
SHIP DESIGN AND SHIP EQUIPMENT MANUFACTURERS



Rauma Marine Constructions



Rauma Marine Constructions



Company name Ablemans Oy
Address Härjänkurruntie 46
 21250 Masku
Tel. +358 2 439 6500
Web www.ablemans.fi
Founded 1987
Revenue 4,5 M€
Employees 8
Contact Marko Ruostekivi
 Toimitusjohtaja
 +358 50 308 2008
 marko.ruostekivi@ablemans.fi



Ablemans Oy

Section and hull assembly, heavy steel work.
 Demanding steel structures, assembly and welding.

Areas of core competence

Demanding plate and welding work in shipbuilding.

References

Rauma Marine Construction
 Meyer Turku
 Arctech Helsinki Shipyard
 Uudenkaupungin työvene



Company name Alfa Laval Aalborg Oy
Address Kaivopuistontie 33
 26100 Rauma
Tel. +358 10 838 3800
Fax +358 10 838 3808
Web http://www.alfalaval.com
Founded 1964
Revenue 40-50 milj. EUR
Employees 85
Contact Harri Lotila
 Managing Director
 +358 10 838 3810
 harri.lotila@alfalaval.com
 Pekka Läiskä
 General Manager, Business
 Management
 +358 10838 3841
 pekka.laiska@alfalaval.com



Alfa Laval Aalborg Oy

Alfa Laval Aalborg Oy provides innovative solutions for fired boilers and heat recovery systems to marine and industrial applications worldwide to improve customers' energy efficiency and emission reductions. The company is nowadays (since 2011) part of a Swedish Alfa Laval group, world leader in heat exchangers and separators.

Areas of core competence

Alfa Laval Aalborg Oy operates in designing, manufacturing and supplying of oil-fired boilers and exhaust gas economizers for ships as well as heat recovery systems for land-based industrial power plants and process industry.

Our core is to provide high efficient boilers with new innovations, as good example natural circulation in marine boilers. Most of all, this is to benefit customer in fuel savings as well as to secure boiler system operational reliability and minimizing maintenance costs.

References

Some examples of our references (among >2500 sold marine boilers):
 WHR and fired boilers for "Mein Schiff 8" cruiser
 WHR and fired boilers for "Mein Schiff 7" cruiser
 WHR and fired boilers for "Fincantieri Maghera 6243" cruiser
 WHR and fired boilers for Tallink ship "Meyer Turku 1391"
 WHR and fired boilers for "Arctech 510" ice breaker
 WHR and fired boilers for "Oasis of the Seas" cruiser
 WHR and fired boilers for "Allure of the Seas" cruiser



Company name Allstars Engineering Group
Address Vanha Tampereentie 187
20380 Turku
Tel. +358 40 700 8519
Web www.aegroup.fi/
Founded 1983
Revenue 10 M€
Employees 70
Contact Jouni Väkiparta
Sales & Marketing Director
+358 40 700 8519
jouni.vakiparta@aegroup.fi
Jukka Suonpää
Managing Director
+358 50 5906411
jukka.suonpaa@aegroup.fi

Foreign subsidiaries:
Allstars Engineering POL; Allstars
Engineering CRO; Allstars Engineering BUL

Allstars Engineering Group

Allstars Engineering Ltd is an innovative design and consulting company established in 1983. Our main office is located in Turku, Finland. We employ 70 people in Finland and close to a hundred people in the Allstars subsidiaries. At Allstars Engineering Ltd we've completed hundreds of projects for a wide range of vessel types, specifically cruise ships.

Areas of core competence

Shipbuilding & Offshore. Design of hull, machinery, HVAC, interior, electricity and deck outfitting. AC-rooms, accommodation module design including complete cabin design packages, cabins and bathrooms.

References

Shipyard: Several passenger vessels and ferries
Shipyard: Multipurpose Ice Breaking Vessels
Cabin design: bathrooms, interior, HVAC and electricity
Offshore Industry: Several oil rigs, hull and outfitting design
Turnkey suppliers: design for Ro-Pax & Cruise Vessels



Company name Aslemetals Oy
Address Niilontie 1 (PL 17, 26101 Rauma)
26410 Rauma
Tel. +358 2 838 011
Web www.aslemetals.fi
Founded 1961
Revenue around 9 M€
Employees 70
Contact Saku Tuominen
Executive vice president
+358 44 730 1027
saku.tuominen@aslemetals.fi
Iiro Lehtinen
Business director
+358 44 268 5124
iiro.lehtinen@aslemetals.fi



Aslemetals Oy

Aslemetals Oy is a metal industry subcontracting company whose primary products are hydraulic/mechanical installations, steel structures and pipe modules for the industry.

Our operations are characterised by deliveries with strict quality requirements. Our operations are handled using a certified integrated management system compliant with ISO 9001, ISO 14001, EN1090-2 and ISO 3834-2.

Currently we operate in three locations: in Kaaro workshop in Rauma and in Lapijoki workshop and Olkiluoto shipyard in Eurajoki.

Areas of core competence

The company's primary products include piping, module, steel and plate structures, installations and concrete industry moulds.

In addition to these, Aslemetals also has extensive experience in delivering turnkey solutions to customers.

Aslemetals Oy serves the needs of e.g. power plant, chemical, shipbuilding, metal and concrete industries both in Finland and internationally.

References

LNG module manufacturing: Gas Valve Units (GVU), open and closed models.
LNG module manufacturing: Bunker stations, Unloading skids.
LNG module manufacturing: Vaporising skids.
Over 6000 manufactured separator and booster modules.
Structural units for engine rooms of PO FERRIES L367 and L368.
Harbour crane bogies and lifting beams etc.
Steam containers, including steel constructions (1090) and pipe works.
Hydraulic and mechanical installations for Metso, including FAT.
Conversion work of m/s Seili, turnkey delivery.



Company name Beacon Finland Ltd Oy
Address Valtakatu 9-11
 26100 Rauma
Tel. +358 2 8387 9500
Web www.beaconfinland.com
Founded 1987
Revenue 2,2 milj. EUR
Employees 13
Contact Tuija Hörkkö
 Managing Director
 +358 40 5433 721
 tuija.horkko@beaconfinland.com
 Timo Rintala
 Technical Director
 +358 40 5011 596
 timo.rintala@beaconfinland.com



Beacon Finland Ltd Oy

Beacon Finland Ltd Oy is a privately owned, independent Naval Architectural & Consulting Company. The company works primarily in cooperation with ship-owners, shipyards and ship equipment manufacturers. Beacon's main service activities are ship design, design and sales of ship equipment for the marine and offshore industry as well as supervision and management of ship repair and conversions.

Areas of core competence

Ship Design Services; concept and basic design.
 Measurement and Analysis Services: strength, vibration, strain and noise.
 Equipment for Pusher-Barge combinations; design and fabrication of JAK®- ATB Coupling System, mounting design & strength analysis.
 Solutions for Merchant and Offshore Vessels; design and fabrication of BeaCan™ Thruster Canister and on-site Thruster Maintenance Solutions.

References

Samsung Heavy Industries
 Hyundai Heavy Industries
 Daewoo Shipbuilding & Marine Engineering Co. Ltd.
 Keppel FELS Ltd.
 Kongsberg Maritime
 Steerprop Ltd.
 Kirby Offshore Marine, LLC
 Reinauer Transportation
 Express Marine Inc.
 Vane Brothers Company

Caverion

Company name Caverion Suomi Oy
Address Kairakatu 1
 26100 Rauma
Tel. +358 10 4071
Web www.caverion.fi
Founded 2013
Revenue 2,5 Mrd €
Employees 17400
Contact Markku Salonen
 Maritime Industry Manager
 +358 40 8437850
 markku.salonen@caverion.com
 Jouni Sarin
 Installation Manager
 jouni.sarin@caverion.com



Foreign subsidiaries:
 Caverion has offices in 12 North, Central and East European countries where it operates.

Caverion Suomi Oy

Caverion designs, builds, maintains and services user-friendly and energy-efficient technical solutions for real estate and industry. Our services are used in offices and commercial real estate, residential and public buildings, infrastructure and industrial plants, among other places. Our goal is to be the leading provider of progressive and sustainable life cycle solutions in Europe.

Areas of core competence

Our strengths include technological expertise and extensive services, covering all the technical aspects during the life cycle of the property or the industrial plant.

- Areas of core competence in maritime industry
- Electrical installations and piping
 - Equipment rooms delivered on a turnkey basis
 - Prefabricated piping products and equipment units
 - Entry into service

References

Oasis of the Seas, cruise ship/electrical installations and piping, technical rooms
 Allure of the Seas, cruise ship/electrical installations and piping, technical rooms
 Viking Grace, passenger ferry/electrical installations, technical rooms
 Turva, offshore patrol vessel/electrical installations and piping, technical rooms
 Heidelberg Spar, ferry/prefabricated piping products and installations
 Lucius Spar, ferry/prefabricated piping products and installations
 Mein Schiff 3, cruise ship/electrical installations, equipment rooms and entry into service
 Mein Schiff 4 cruise ship/electrical installations, equipment rooms and entry into service
 Mein Schiff 5 cruise ship/electrical installations, equipment rooms and entry into service



Company name Delete Finland Oy
Address Hakunintie 24
26100 Rauma
Tel. +358106561000
Web www.delete.fi
Founded 1982
Revenue 100+ m€
Employees 700
Contact Ville Jalava
Regional Manager, Western Finland
+358407431996
ville.jalava@delete.fi
Olli Hietala
Foreman
+358403513738
olli.hietala@delete.fi



Foreign subsidiaries:
Delete Sweden Ab

Delete Finland Oy

Delete is a fast-growing company specializing in environmental services for various sectors of industry, construction and property sector customers in Finland and Sweden. We also offer services for challenging environmental situations. Delete provides industrial services, property services, heavy demolition services and recycling and waste management services.

Areas of core competence

With Delete's extensive network of operations you can find experts for every sector of industry. We can handle any task in just about any industrial sector thanks to our extensive experience, which covers the petrochemical, pulp and paper, energy production, and ship-building industries, to name a few. Delete offer ships and shipyards complete cleaning services. Our wide range of equipment, long experience in ship cleaning and highly skilled staff can solve any cleaning challenge – from everyday obstacles to the seemingly impossible.

References

Rauma Marine Constructions Oy
Euroports Rauma Oy
Metsä Fibre
Yara Uusikaupunki
Metsä Fibre
UPM Kymmene
Hacklin Pori



Company name Deltamarin
Address Kanalinranta 5
26100 Rauma
Tel. +358 2 8386 500
Web www.deltamarin.com
Founded 1990
Revenue 2018: €47.5M
Employees 400 (Group)
Contact Tonny Bakker
Head of Rauma office
+358 40 5877 708
tonny.bakker@deltamarin.com
Esa Jokioinen
Director, Sales & Marketing
+358 40 8348 112
esa.jokioinen@deltamarin.com



Foreign subsidiaries:
Deltamarin Sp.z o.o., Puola; Deltamarin (China) Co., Ltd; Kiina

Deltamarin

Deltamarin is a ship design, offshore engineering and construction Group operating in the marine and offshore industries worldwide. Our head office is located in Turku. Other offices are located in Rauma and Helsinki in Finland, and in Europe and Asia. Deltamarin is a subsidiary of AVIC International Maritime Holdings Limited.

Areas of core competence

All design areas of ships and marine structures (offshore) and lifetime consulting. All disciplines: product and project development, concept design, hull and outfitting, machinery and HVAC, interior and electrical. Main focuses of product development: 3D modelling, hydrodynamics as well as propulsion and machineries to improve the energy efficiency of the final product. EPCM services including project management, procurement, installation and supervision.

References

Viking Glory, LNG-fuelled ro-pax vessel for Viking Line
Global Class mega passenger cruise ships
Ro-pax ferries for Stena
Rosa dei Venti, ro-ro carrier
Container vessels for Eimskip and RAL
LNG-fuelled car passenger ferry for Kvarken Link AB
Martin Linge FSO
DFDS ro-pax ferries
Stolt Pride, chemical tanker
B.Delta bulk carriers (more than 120 vessels ordered)



Company name Enersense International Oyj
Address Suojantie 5
 26100 Rauma
Tel. +358 2 633 7722
Web www.enersense.com
Founded 2005
Revenue 47,4 M€ in 2018
Employees 727 average in 2018
Contact Jaakko Leivo
 COO
 +358 40 079 4543
 jaakko.leivo@enersense.com
 Jussi Holopainen
 Managing Director
 +358 44 517 4543
 jussi.holopainen@enersense.com



Foreign subsidiaries:
 Enersense SAS in France; Enersense GmbH in Germany; Enersense As in Norway; Enersense Hungary KFT;

Enersense International Oyj

Enersense International Oyj's goal is to be a next-generation flexible business partner for industrial projects, especially large ones. Our mission is to develop industrial competitiveness. Enersense optimises project management, resource allocation and production. Our main customer industries are energy, construction and shipbuilding. Enersense is experts and workforce operator by offering services flexibly and globally to meet the needs of customers. Our efforts to take care of employees and manage occupational safety have made us an appealing employer.

Areas of core competence

Enersense's operations, products and services are divided into three business units.
 1. Resources business unit find the right professionals in project management, planning, logistics, site management, control, implementation, production etc. We offer full package services of human resources. We take care of all back office functions of experts and workforce. 2. Engineering & Manufacturing business unit provides high-tech manufacturing of steel and floating structures, frames, hulls and blocks, surface treatment and technical engineering. We have capacity of 300 professional welders and painters with equipment. ISO 3834-2, ISO 9001, ISO 14001 and OHSAS 18001. 3. Digital Solutions & Services business unit has created E-Sense scalable digital project resource platform for transparency control and information management. It serves subcontracting and contracting chains as well as building projects.

References

The biggest one experts and workforce operator at Olkiluoto NPP
 Painting projects in Olkiluoto NPP
 All Shipyards in FIN: steel structure manufacture & surface treatment
 Shipyard in Germany: steel structure outfitting
 Shipyard in France: grand block- and hull assembly
 New Power Plant piping work at Kilpilahti
 Tank repair work and workforce at Venator's site
 Access Control System in biotechnology factory site at Äänekoski
 Contractor Information Management for petrochemical plants
 Painting projects at Flamanville NPP



Company name ENG'nD Oy
Address Tikkalantie 1
 26100 Rauma
Tel. +358 (0)10 670 8000
Web www.engnd.com
Founded 2009
Revenue 4 900 000 € (2018)
Employees 70
Contact Heikki Malmi
 CEO
 +358408322923
 heikki.malmi@engnd.com



ENG'nD Oy

Technology Design and Engineering ENG'nD Oy, the wholly-owned subsidiary of Meyer Turku, has a long history in the design and engineering services for shipbuilding, offshore and process industry. ENG'nD Oy was established in 2009 in the connection with the acquisition. Previous companies have already operated in shipbuilding, offshore and process industry since year 1982. The company employs 70 design professionals. ENG'nD has offices both in Rauma (the main office) and Pori.

Areas of core competence

The company's areas of core competence are in shipbuilding, offshore and process industry.

ENG'nD Oy provides engineering services for shipbuilding industry, system suppliers and their network. The company has over 30 years of experience working with the demanding projects. Today most of our marine assignments come from cruisers, ferries and special ship projects. Together with our network we do basic and detail design and site supervision for shipyards' turnkey- and system suppliers. Our services cover also project management, mechanical completion, engineering of modular applications and SRIP analysis.

Used Programs in shipbuilding industry are
 AVEVA, PDMS, Cadmatic, AutoCAD, Solid Works, Catia V6

In offshore industry ENG'nD Oy provides offshore engineering services for project execution phase including basic design, detail design, mechanical completion and project management.

Used Programs in offshore industry are
 AVEVA, PDMS, AutoCAD, Solid Works

In Process industry we provide qualified personnel for design, procurement and commissioning services.

References

Mein Schiff 3-6 (Meyer Turku Oy/TUI Cruises)
 Tallink LNG Shuttle Vessel Megastar (Meyer Turku Oy/Tallink Group AS)
 Offshore Patrol Vessel Turva (STX Finland Oy/Finnish Border Guard)
 S.A. Agulhas II (STX Finland Oy/DEAT, South Africa)
 Perdido Truss Spar (Technip Offshore Finland Oy/Shell)
 Tahiti Truss Spar (Technip Offshore Finland Oy/Chevron North America)
 Mad Dog Truss Spar (Technip Offshore Finland Oy/BP)
 Apache Pipe Layer Vessel (Technip Offshore Finland Oy/Technip UK)
 UPM-Kymmene Oy (Rauma Mills)
 Olkiluoto 3 Nuclear Plant Project (Teollisuuden Voima Oy)



Company name Ermail Oy
Address Suojantie 5
26100 Rauma
Tel. +358400592305
Web www.ermail.fi
Founded 1989
Revenue Around 10 M€
Employees 100
Contact Jussi Seikkula
CEO
+358400592305
jussi.seikkula@ermail.fi



Ermail Oy

In our Rauma facilities, we handle projects from the very small to ship block.

We do blasting with both traditional sand and non-waste (recycled) steel abrasive system which is environmentally friendly.

We do corrosion proofing for all types of material to the standard you stipulate. As part of our service we can also carry out fire retarding paintwork.

With our mobile equipment we can work everywhere in Finland and countries nearby. We have surface treated many targets like, ships, car ramps, landing bridges (gangways), tanks, cranes, and other hard targets.

We have been working with some companies for many years and the reasons are to do with our quality, our delivery on time and our personal relationships based on trust.

We believe in the service we deliver.

Areas of core competence

Hydro blasting and spray painting

References

Surface treatment on propellers as contract manufacturing: KM, Steerprop
Finishing on crushers as contract manufacturing: Metso Minerals
Surface treatment and maintenance painting on ships: RMC, Meyer Turku
Surface treatment on equipment units as contract manufacturing: Aslemetals Oy
Surface treatment on buildings: Viking Line Abp, Port of Stockholm
Surface treatment on gangways and harbour equipment: Lohkoasennus Oy
Surface treatment on crushers: Hollming Concern
Surface treatment on minelayers: The Finnish Defence Forces



Company name Evetco Oy
Address Voltitie 18
26100 Rauma
Tel. +358 440 124 114
Web www.evetco.fi
Founded 2004
Revenue 2,2 million
Employees 10
Contact Esa Lehtinen
Managing director
+358 440 124 114
esa.lehtinen@evetco.fi
Toni Lehtinen
International sales
+358447666977
toni.lehtinen@evetco.fi



Evetco Oy

Evetco Oy provides machining and facilities rental services for machine building and marine technology industries. Our services include turnkey deliveries of various scopes from welding and machining to final assembly and testing. We have 4 modern Fpt milling and boring machines Ronin, Spirit, Area and Tessen to perform machining operations.

Evetco Oy has DNV certified ISO 9001 and 14001 management system. Welding supervision is managed by IIW authorized International Welding Engineer.

Areas of core competence

Machining capabilities of the milling boring machines:

- The Ronin machine has fixed table and travels of longitudinal (X) 12 m, vertical (Y) 3 m and cross (Z) 1,5 m.
- The Spirit machine has 30 t rotating sliding table and travels of longitudinal (X) 14 m, vertical (Y) 4 m and cross (Z) 1,5 m.
- The Area has 30 t rotating sliding table and travels of longitudinal (X) 10 m, vertical (Y) 3,5 m and cross (Z) 1,5 m.
- The Tessen has a table of 8 t and travels of longitudinal (X) 3,5 m, vertical (Y) 1,5 m and cross (Z) 1,02 m.

References

Steel construction and machine building
Marine and offshore
Oil, gas and energy

FORESHIP



Company name Foreship Rauman Toimisto
Address Kalliokatu 2
 26100 Rauma
Tel. +358 40 5679438
Web www.foreship.com
Founded 2002
Revenue 12 Meur
Employees 102
Contact Ari Huttunen
 Head of Ferry Design
 +358 40 5679438
 ari.huttunen@foreship.com



Foreign subsidiaries:
 Foreship LLC, Miami, Seattle, USA
 Foreship OÜ, Viro, Tallinna

Foreship Rauman Toimisto

Foreship Ltd. is an independent company, owned by the employees. Our specialty is ship design and engineering. Our personnel of more than 90 naval architects, marine & structural engineers, interior & HVAC designers and electrical engineers provide you with the flexible, high quality and personal service available only from a company of the right size. We apply state of the art software and sound judgement based on extensive experience in all of our projects.

Areas of core competence

Our experts include Naval Architects, Marine Engineers, Structural Engineers, Interior Architects, Interior Designers and HVAC Designers, most having at least 10 years experience working in shipyards, consultancies or other marine industry positions in addition to their years at Foreship.

References

Oriana Conversion 2011: Hull Form development
 Armorique New Building Project 2009: Technical Management
 Fintrader Ropax Conversion 2007: Design, Management

Konepaja
HALLAWORKS

Rauma • Finland

Company name HallaWorks Oy
Address Kuivassuontie 8
 26510 Rauma
Tel. +358 2 83769850
Web www.hallaworks.fi
Founded 2001
Revenue 1,2 M€
Employees 12
Contact Olli Ritakorpi
 Plant Manager
 +358 50 5617267
 olli.ritakorpi@hallaworks.fi
 Niina Pekonen
 Managing Director
 +358 50 4301332
 niina.pekonen@hallaworks.fi



HallaWorks Oy

HallaWorks is a Finnish machine shop that manufactures machine parts. We machine components from customer specifications using modern CNC-technology. We maintain the same quality and flexibility regardless of the size of the part or series.

Areas of core competence

Medium-Heavy turning, milling, boring and welding.

References

Steerprop Ltd
 Konecranes Finland Oy
 ABB Marine Oy
 Santasalo Gears Oy
 Sew Industrial Gears Oy
 Kumera Drives Oy
 Andritz Oy
 UPM Kymmene Oyj
 Rolls-Royce Oy



Company name Hollming Group
Address Sinkokatu 11
26100 Rauma
Tel. +358 20 486 5000
Fax +358 20 486 5001
Web www.hollming.fi
Founded 1945
Revenue 30 M€
Employees 150
Contact Marja Kalli
Executive assistant
+358 50 543 9975
marja.kalli@hollming.fi



Foreign subsidiaries:
Auramarine Asia Ltd.

Hollming Group

HOLLMING is a corporation, which owns and develops businesses that require strong technological know-how. The Group consists of parent company Hollming Oy and companies from different business areas (Energy and Environment, Auxiliary equipment and Maintenance).

Areas of core competence

Finnish family-owned company – international corporation, which has strong know-how on demanding business areas. The world's most popular fuel supply systems for diesel engines are manufactured in Auramarine's factories in Finland and China. BMH Technology designs and delivers solid waste and biomass handling systems and services for waste management, energy production and process industry operators. Raiha Hydraulics and Simsotec offer tailor-made maintenance services for industry.

References

Over 10 000 various auxiliary systems delivered to customers
Fuel oil supply systems for ships and powerplants
Hydraulic lifting mechanisms for smoke stacks for cruise vessels



Company name Inspecta Oy / Kiwa NL
Address Suojantie 5
26100 Rauma
Tel. +358 10 521 600
Web www.kiwa.com
Founded 1948
Revenue 487 Meur
Employees 4300
Contact Jukka Verho
Commercial Director
+358 50 310 1787
jukka.verho@kiwa.com
Reijo Heikkinen
Sales Manager
+358 500 429 149
reijo.heikkinen@kiwa.com



Inspecta Oy / Kiwa NL

We are Kiwa, a world top 20 leader in Testing, Inspection and Certification (TIC). With our certification, inspection, testing, training and consultancy services, we create trust in our customers' products, services, processes, (management) systems and employees. Inspecta joined the Kiwa family on 2015.

Areas of core competence

Kiwa wants to help companies and organisations go forward as an independent, impartial and innovative partner. You have the ambition and Kiwa has the knowledge to help you achieve progress. Kiwa's core business lies in activities in Testing, Inspection and Certification (TIC), Training and Consultancy. The specialists from Kiwa aim for a long-term relationship with you that is based on equality in order to help you improve your organisation, products, services, processes, management systems and employees. Thus, we aim to contribute to organisations being able to offer quality and adding value to society thanks to their reliability, safety, efficiency and sustainability.

References

Neste Porvoo and Naantali refinery turnovers
Pori LNG-terminal inspections 2015 (many companies)
Metsä Fibre Äänekoski Bioproduct Mill (2018)
Borealis Polymers Oy turnovers (2012)
+ other sea cluster clients for example ABB Marine, Mayer Turku



Company name Koneistus J.Salminen Oy
Address Linjavainiontie 6
 26510 Rauma
Tel. +358 2 8230 969
Web www.koneistusjosalminen.fi
Founded 1984
Revenue 3,8 milj. €
Employees 16
Contact Jarkko Salminen
 CEO
 +358 2 8230 969
 jarkko.salminen@kjsoy.fi
 Jukka Salminen
 Production Manager
 + 358 2 8230 969
 jukka.salminen@kjsoy.fi



Koneistus J.Salminen Oy

We work as machining subcontractors, using modern machinery, and have the quality system ISO 9001:2015/Bureau Veritas in use.

Areas of core competence

- Machined axles, maximum length 6000 mm
- Flange-like pieces, maximum diameter 550 mm
- Assembling the pieces we have machined

References

Kongsberg Oy
 Steerprop Oy
 ETS- Lindgren Oy
 Oy Lai-Mu Ab
 Oras Oy
 Meyer Turku Oy
 Arctech Helsinki Shipyard Oy
 ABB Oy, Motor and Generators Oy
 Aslemetals Oy
 Lohkoasennus Oy



KONGSBERG

Company name Kongsberg Maritime Finland Oy
Address Suojantie 5
 26100, Rauma
Tel. +358 2 8379 1
Web www.kongsberg.com
Founded 1988
Revenue 211,3 MEUR
Employees 550
Contact Olli Rantanen
 Managing Director, SVP Thrusters
 olli.rantanen@km.kongsberg.com
 Tommi Pitkänen
 Contract Management
 tommi.pitkanen@km.kongsberg.com



Kongsberg Maritime Finland Oy

Kongsberg Maritime provides a comprehensive range of high technology systems and solutions for its customers for demanding conditions worldwide.

Areas of core competence

Maritime industry, thrusters, winches, maintenance services

References

Nordica and Fennica, multipurpose icebreakers, Arctia Shipping, ARC 1.0
 Over 3,000 merchant vessels, tugboats and icebreakers equipped with winches
 Stella, FinFerries: US 255 azimuthing thrusters
 Winches for Viking XPRS, Mariella, Tallink Star, Superstar and Galaxy
 Pioneering Spirit, Allseas: 12 x UUC 455 equipment
 Largest container ships, MSC Oscar series 19200 TEU: winches
 Bugser og Bergingin's LNG powered tugboats, US 35 CP equipment
 Damen tugboat production, Smit Panther, US 285 equipment



Company name Kukukari Oy
Address Huuhkajantie 11 A
26100 RAUMA
Tel. +358 400 821026
Web www.kukukari.fi
Founded 2014
Revenue around 150 000 €
Employees 1
Contact Tapani Mannonen
CEO
+358 400 821026
tapani.mannonen@kukukari.fi



Kukukari Oy

Builder of cooperation networks

Kukukari Oy aims to find the best possible partners for each project and to introduce them to one another for a close cooperation. After a solid foundation for cooperation has been built, Kukukari will offer its services for maintaining and deepening that cooperation between the partners. Our aim is to build a competitive, flexible and cost-effective partner network.

Areas of core competence

Business consulting. Services: cooperation network building, subcontractor services, sales, customer acquisition, project management, training, commercialising services, marketing, planning and implementing development projects in cooperation with different partners.

References

Offshore projects in Norway
Workshop manufacturing in Finland
Environmental and energy industry projects
Training projects
Establish of joint venture companies to low cost countries

Laatu- Ja Tuottavuuskonsultointi Markku Ollila

Laatu- ja tuottavuuskonsultointi Markku Ollila was founded in 1997. I offer my expertise in quality, environmental, and occupational health and safety systems for organisations and enterprises. My projects range from one-day assessments of a company's current situation to several years of functioning as a company's quality manager.

Areas of core competence

Operational system development, training and consulting (ISO 9001:2015)
Quality management development, from the initial assessment to continuous improvements in quality management
Identification and evaluation of environmental aspects, system development (ISO 14001:2015)
Development and maintenance of occupational health and safety systems (ISO 45001:2018)

References

Over 50 certified companies from a wide range of fields
Several maritime industry subcontractors
Quality management assessment, Olkiluoto 3 project (Prizztech Oy)





LSTGROUP

Company name LST Group
Address Suojantie 5
 26100 Rauma
Tel. +358 2 5100 300
Web www.lst.fi
Founded 1962
Revenue 20 000 000 €
Employees 165
Contact Juha Vainio
 Area Manager
 juha.vainio@lst.fi



LST Group

LST Group is a Finnish group of companies specialized in electrical engineering. Our main business areas are marine, energy and process industries, buildings and rolling stock. The group was founded in 1962 and employs 165 employees with an estimated annual revenue of 20 M€. All our operations are certified with the ISO9001 quality certificate. The group companies are LST Group Oy, Laivasähkötyö Oy, LST Projects Oy, LST Engineering Oy, LST Teollisuussähkö Oy, LST Service Oy, LST Production Oy and LST Sähköpalvelu Oy.

Areas of core competence

Our expertise and competence in the marine sector originates from over 50 years of experience in this field.

Our marine key competences are:

- Electrical installations and system commissioning work
- Electrical and mechanical design
- Repair and maintenance of ship electrical equipment.
- Specially designed products for marine use including cable trays, penetrations and ship technical light fixtures.
- Turnkey deliveries of electrical and technical areas

References

Meyer Turku Oy: electrical work, turnkey projects, design and material
 Arctech Helsinki Oy: electrical and commissioning work, materials
 Rauma Marine Constructions Oy: electrical work, design and materials
 Finferries: electrical work, materials and product development
 Tallink Silja Oy: electrical equipment maintenance and repairs
 Viking Line Oy: electrical equipment maintenance and repairs

onninen

Company name Onninen Oy
Address Suojantie
 26100 Rauma
Tel. +358408681997
Web www.onninen.fi
Founded 1913
Revenue 881 milj (Suomesa)
Employees 1500 (Suomesa)
Contact Martti Lehti
 Regional Sales Director
 +358400522083
 martti.lehti@onninen.com
 Jaana Paldanius
 Technical Sales Representative
 +358408681997
 jaana.paldanius@onninen.com



Onninen Oy

Onninen supplies products and services for the needs of contractors, industry, shipyards, infrastructure developers and resellers. Onninen operates in Finland, Sweden, Norway, Estonia, Latvia, Lithuania and Poland. The company has approximately 150 service points, 50 of which are in Finland.

Areas of core competence

Pipeline products, electrical products and products for the shipbuilding industry.

References

Meyer: service warehouse for products for the Turku shipyard
 Harjavalta Ratala Industry: service warehouse for industrial products
 Several customer warehouses are located at customers' premises



Company name PMC Hydraulics Oy
Address Peltivahe 4 A
26100 RAUMA
Tel. +358 (0)20 7709700
Web www.pmchydraulics.com
Founded 1970
Employees 100
Contact Ville Paananen
Sales, Marine & Offshore
+358 (0)207 709 244
ville.paananen@pmchydraulics.com
Kimmo Salo
Sales Manager
+358 (0)207 709 486
kimmo.salo@pmchydraulics.com



PMC Hydraulics Oy

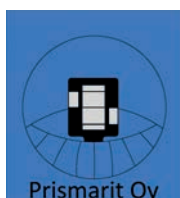
Power, Motion and Control for tomorrow's needs! PMC Hydraulics is the Nordic leader of innovative hydraulic solutions for marine and mobile applications, manufacturing industries and energy production. By providing everything from customized systems to components and special products we have the ability to offer our customers the best complete solutions.

Areas of core competence

Hydraulics, electro mechanics and lubrication solutions. A solid understanding of the industry. Experienced product development and manufacturing of customized solutions. High-quality standard products from leading hydraulics manufacturers. Hydraulic cylinders, centralized hydraulic power systems, thruster steering hydraulics, crane hydraulics, oil spill recovery system hydraulics, side door hydraulics, hatch cover hydraulics, winch hydraulics, capstan hydraulics, mast stowage hydraulics, helideck lifting hydraulics, ramp hydraulics.

References

Rolls-Royce
Uudenkaupungin Työvene
STX Rauma
Lamor Corporation
McGregor
RB-Asennus
Steerprop
ABB
Gardner Denver



Company name Prismarit
Address Tallikedonkatu 4 E
26100 Rauma
Tel. +358 2 8220430
Web www.prismarit.fi
Founded 1979
Revenue 1160000 €
Employees 14
Contact Rami Panell
CEO
+358 44 7422154
rami.panell@prismarit.fi



Prismarit

Established in 1979, Prismarit Oy is a measurement company based in Rauma. Our main line of business is providing a variety of measuring services to industry, planners and builders.

We have operations all over Finland as well as the Baltic region. Our main operating area currently is southern and western Finland.

Our employees have decades of experience in a variety of measurement and survey work, and we operate in accordance with ISO 9001:2008 quality management certificate, which was awarded to us by Det Norske Veritas.

Areas of core competence

Measurements for shipbuilding and offshore industry
Laser scanning
3D dimensional metrology
Measurements for the construction and metal industries
Land surveys and measurements for hydraulic engineering
Measurements for rock and tunnel excavation

References

Meyer Turku
Rauma Marine Construction
Kongsberg Marine Finland
Technip Offshore Finland
Arctech Helsinki Shipyard
Rolls Royce Marine
SteerProp
Patria Aerostructures
Teollisuuden Voima



Company name Proins
Address Köykäntie 97
 27100 Eurajoki
Tel. +358 400 228 419
Web www.proins.fi
Founded 1987
Revenue 4,1 milj.€
Employees 35
Contact Rajala Pekka
 Chairman of the Board
 +358 400 228 419
 pekka.rajala@rrss.fi
 Koskialho Erkki
 Production Manager
 +358 50 307 3562
 erkki.koskialho@proins.fi

Proins

Proins Oy, a machine workshop founded in 1987, is located in Eurajoki. We manufacture pipeline systems, steel structures and different types of machinery and equipment. We also supply equipment for maritime and process industry customers. We have extensive experience in projects for the shipbuilding industry, power plants and process industry, and our personnel are highly qualified. We strive for continuous development internally and in cooperation with our customers. A flexible way of operating with the needs of the customer at the core ensures that our customers are satisfied and that our operations are profitable.

Areas of core competence

Metal structures and machines, pipeline installations and metal machining.

References

ARCTECH Helsinki: vessels NB510, -511, -512, -513 and -514
 RAUMA MARINE CONSTRUCTIONS
 ALFA LAVAL AALBORG Oy
 BMH TECHNOLOGY Oy
 LEIMET Oy
 BOLIDEN HARJAVALTA
 Kongsberg Maritime Finland Oy
 Teollisuuden Voima Oy



Company name Quant Finland Oy
Address Isometsäntie 9-11
 26100 Rauma
Tel. +358400230090
Web www.quantservice.fi
Founded 2013
Revenue 2018: 66 million
Employees Over 600
Contact Pekka Venäläinen
 CEO
 + 46(0)10 45 664 01
 pekka.venalainen@quantservice.com
 Toni Siivonen
 Yksikönpäällikkö
 +358505681136
 toni.siivonen@quantservice.com

Quant Finland Oy

Quant is a global leader in industrial maintenance. For over 30 years, we have been realizing the full potential of maintenance for our customers. From embedding superior safety practices and building a true maintenance culture, to optimizing maintenance cost and improving plant performance, our people make the difference. We are passionate about maintenance and proud of ensuring we achieve our customers' goals in the most professional way.

We take full responsibility for maximising the potential of all aspects of maintenance, from management to organization and execution of all site activities for corrective and preventive maintenance, as well as shut downs, upgrades and modifications. We take a holistic approach and commit to improving safety, productivity and energy efficiency while optimizing cost. Based on your needs, we will tailor the scope and business model.

Areas of core competence

Industrial electrics and automation services
 Industrial mechanical maintenance services
 Services for cranes and lifting equipment
 HVAC services
 Maintenance services for electric machines
 Machining services
 Services for production effectivity and maintenance systems

References

Rauma Marine Constructions
 Seaside Industry Park
 Euroports Rauma
 Logistikas
 Kongsberg
 Enersense
 Lohkoasennus
 Arctia



Company name Rauma Interior Oy
Address Hallitie 8
26510 Rauma
Tel. +358 2 8387 8200
Web www.raumainterior.fi
Founded 1992
Revenue 6.5m€
Employees 40
Contact Kari Wendelin
Managing Director
+358 400 160 905
kari.wendelin@raumainterior.fi
Kimmo Horto
Project manager
+358 440 878 080
kimmo.horto@raumainterior.fi



Rauma Interior Oy

Rauma Interior Oy manufactures customer designed and purpose built furniture in various materials for shipbuilding and on-shore customers in Finland and abroad.

Areas of core competence

Fixed and free standing furniture for cruise liners, passenger vessels, supply vessels, ice-breakers, off-shore etc. Furniture for accommodation areas (cabins, hotel rooms), public spaces (restaurants, spas, hospitals, schools). Wardrobes, dressing tables, dining tables, cabinets, bardeks, decorative columns, beds in metal and wood.

References

Meyer Werft Turku, Piikkio, cabin furniture, public spaces
Costa Cruises, cabin furniture, public spaces
Archtech Helsinki, cabin furniture, public spaces
Carnival Cruise Line, furniture
Disney Cruises, furniture
Royal Caribbean Cruise Line, furniture
Hospital furniture in Finland
School furniture in Finland
Furniture for pharmacies in Finland
Furniture for offices and malls in Finland and abroad



Company name Rauma Marine Constructions
Address Suojantie 5
26101 Rauma
Tel. +358 30 600 5400
Web www.rmcf inland.fi
Founded 2014
Revenue 29,7 m€
Employees 110
Contact Jyrki Heinimaa
CEO
+358405564456
jyrki.heinimaa@rmcf inland.fi
Markku Uusitalo
Production Manager
+358400225568
markku.uusitalo@rmcf inland.fi



Rauma Marine Constructions

Rauma Marine Constructions (RMC) is a wholly Finnish-owned shipbuilding company formed in summer 2014 in Rauma. RMC specializes in building and servicing multipurpose icebreakers, car and passenger ferries and naval vessels.

More information available at www.rmcf inland.fi.

Areas of core competence

Our core expertise is ship construction and maintenance. We specialise in the construction and maintenance of multi-purpose icebreakers, car and passenger ferries, and vessels for use by the armed forces. We represent world-leading expertise in Arctic shipbuilding, an area heavily relied upon by the knowhow and competitiveness of the Finnish marine industry.

References

Molslinjen, car and passenger ferry Hammershus
Finnish Environment Institute, conversion of research vessel Aranda
Admares Oy, Beach platform Unit



Company name Rauma Plan Oy
Address Nortamonkatu 24
 26100 Rauma
Tel. +358-44-7979 365
Web www.raumaplan.fi
Founded 1996
Revenue abt. 3,5-4 m€
Employees abt. 40-60
Contact Ilkka Rantanen
 CEO
 +358-40-8306467
 ilkka.rantanen@raumaplan.fi

Rauma Plan Oy

Rauma Plan Oy delivers world-class design, engineering and supervisory services for global marine & offshore operators and process industry. Examples of customer base are: shipyards, turn-key contractors, marine equipment suppliers. We have capacity of 40 highly experienced engineers inhouse and average of 20 dedicated freelancers to fulfil needs of the global partners.

Areas of core competence

Basic + Detail design & Construction Support Services:

- Machinery and piping
- Deck outfitting
- Hull and steel outfitting
- HVAC
- Energy efficiency and analysis
- Interior
- Safety
- Production planning

We can provide capacity of 20+ pre-qualified engineers with official qualifications/acceptance for projects with special classification requirements (fg. Navy + Defence + Coast Guard).

References

Rauma Marine Constructions
 Arctech Helsinki Shipyard
 Meyer Turku & several Meyer Group companies
 Uki Workboat
 Technip Offshore Finland
 Kone Elevators Marine
 Naval Interior Team
 R&M
 Kaefer



Company name Raumametals
Address Hakunintie Rauman Satama Halli 41 D
 26100 Rauma
Tel. +358500785304
Web Raumametals.fi
Founded 2001
Revenue 1,3 milj. eur
Employees 10
Contact Kai Lehtinen
 CEO
 +358500785304
 kai.lehtinen@raumametals.fi

Raumametals

Raumametals Oy: comprehensive knowledge in shipbuilding, steel production, maintenance, etc.

Areas of core competence

Steel work, assembly, welding, aluminium work, piping, etc.

References

Oil-spill response vessel Wilkk, renovation in 2013
 Passenger vessel Eivor, installing a rear ramp
 Buoy tender renovation
 Several supply and maintenance vessels





Company name Rauman Akku Oy
Address Hakunintie 7
26100 Rauma
Tel. +358 2 555 211
Fax +358 2 555 2144
Web www.raumanakku.fi
Founded 1958
Revenue 9,0 MEUR
Employees 31
Contact Marko Virta
CEO
+358 2 555 2127
marko.virta@raumanakku.fi
Rauman Akku Oy
Telephone exchange
+358 0 555 211
info@raumanakku.fi



Rauman Akku Oy

Rauman Akku is a family business founded in 1958. We sell industrial and technical products in Rauma and its surrounding areas. Our customer base includes both private and corporate customers. Our strengths are a wide product range, quality products and professional staff.

Areas of core competence

We have over 34 000 products on stock.

Our range includes hydraulics, fastenings, bearings, pneumatics, PPE's, gaskets and sealants, tools, abrasives, personal protective equipments, oils, electrical motors, welding equipment and supplies etc. And of course, batteries.

If you still didn't find what you were looking for, do not hesitate to contact our experts.

References

Kongsberg Maritime Finland Oy
Areva
Teollisuuden Voima
Raumaster Oy
Vahterus Oy
Rauma Marine Constructions Oy
UPM Compapers Rauma
Steerprop Oy
Calortec Oy
LMG Finland Oy



Company name Rauman Hydrauliiikka Ja Metalli Oy
Address Kolmiladontie 2
26510 Rauma
Tel. +358 40 5301811
Web www.rhmoy.fi
Founded 1987
Employees 7-10
Contact Antti Kaukkila
CEO
+358 40 5301811
toimisto@raumanhydrauliiikka.fi



Rauman Hydrauliiikka Ja Metalli Oy

Rauman hydrauliiikka ja metalli Oy is a reputable workshop in Rauma, famous for its workmanship. We produce and work on different metal and steel structures and manufacture industrial hydraulics on a turn-key basis as subcontractors and as a commission workshop. We sell businesses and private individuals all kinds of metals and profiles available.

Areas of core competence

A metal industry commission workshop that also does installation work.

References

Steerprop Oy
Rolls-Royce Oy
UPM
TVO
City of Rauma
STX
Rauma Marine Constructions
Meyer Turku



Company name Rauman Konepaja Oy
Address Jousitie 8
 26100 Rauma
Tel. +358 50 0123295
Web www.raumankonepaja.fi
Founded 1981
Revenue 2 M€
Employees 14
Contact Sami Stenvall
 Sales, Quality and Design
 +358 44 2399779
 sami.stenvall@raumankonepaja.fi



Rauman Konepaja Oy

Rauman Konepaja is a family company that was formed in 1981. The company focuses on demanding engineering workshop deliveries. Our company's operations have been developed with a long-term approach and the company is known for being a reliable employer and business partner. Rauman Konepaja have ISO 9001:2015 certified Quality Management System. Success in spare part delivery requires flexibility, delivery certainty and flawless execution. We utilize the newest technology in our operations. The shape of an existing part can be measured and modeled combining 3D measuring and laser scanning. Acquisitions are done together with the deliverer and are drawn up beforehand in accordance with the quick delivery plan.

Areas of core competence

We are specialized in CNC-turning, -milling and boring. Our versatile machine stock, modern facilities and skilled workers enable the delivery of precisely measured parts in the agreed timeframe. The weight of the manufactured parts varies from one kilo to five tons. We perform the liquid penetrant inspection SFS-EN ISO 9712 with a level 2 qualification.

References

Marine Industry
 Machine Building
 Material Handling
 Spare Parts Delivery



Company name ResMarine Oy
Address Suojantie 5
 26100, Rauma
Tel. +358 50 4483325
Web www.resmarine.fi
Founded 2014
Revenue 4,5 milj. (ResRent-concern)
Employees 60
Contact Timo Kallio
 Project Manager
 +358 50 4483325
 timo.kallio@resmarine.fi
 Rami Rintanen
 CEO
 +358 40 7520531
 rami.rintanen@resmarine.fi

ResMarine Oy

ResMarine Oy is based in Rauma and was founded in 2014. ResMarine Oy is part of the ResRent concern, and produces comprehensive scaffolding and weather protection services, as well as hires labour for the maritime industry, constructions and other industries. The company's office is located in the Seaside Industry Park Rauma, and its staff have extensive experience in the shipyard industry.

Areas of core competence

Designing, assembling, renting and selling of scaffolding and weather protection. Hiring labour for the maritime industry. Realising projects and reacting swiftly to new situations, while ResRent Finland Oy provides the human resources and PERI Suomi Ltd Oy supplies the materials.

References

Tallink Silja Symphony, docking in Rauma
 Tallink Silja Serenade, docking in Rauma
 JM Otso conversion, Rauma
 M/S Oslofjord conversion, Rauma
 UVL Turva offshore patrol vessel, built in Rauma (Project Manager, scaffolding work)



Company name RTK-Palvelu Oy
Address Papinhaankatu 8
26100 RAUMA
Tel. +358 44 765 7145
Fax +358 2 838 72250
Web www.rtkpalvelu.fi
Founded 1972
Revenue 110M€
Employees 3300
Contact Jani Pelamo
Unit Manager
+358 44 7657145
jani.pelamo@rtkpalvelu.fi
Mikko Futtari
Service Manager
+358 50 468 8900
mikko.futtari@rtkpalvelu.fi



RTK-Palvelu Oy

RTK-Palvelu Oy offers facility maintenance and cleaning services in 30 locations all over Finland. In addition, we tailor customer-specific service solutions including technical and industrial services, office support and support systems for facility management. Our goal is to continuously expand our range of services and improve our service quality in a customer-oriented manner. In this way we want to grow further - today RTK-Palvelu group's turnover is around 110 million euros and it employs over 3.300 service professionals, all at your service.

Areas of core competence

Our services include:

Facility maintenance:

General facility maintenance, indoors and outdoors; technical maintenance and energy conservation services; technical inspections; repair and small construction work; facility maintenance support system

Cleaning services:

Contract cleaning; special cleaning for industries; removal cleaning; floor mat service; textile and furniture service for hotels and passenger boats; industrial cleaning

Office assistance:

Reception and secretarial services; mailroom and dispatch services; meeting and refreshment services; multiservices - professional services for temporary needs; service insourcing

Industrial services:

Industrial cleaning; pressure washing; suction cleaning and multifunctional truck services (sewage suction and water sprinkling); structural maintenance and instrument service; waste management services including hazardous waste; tailored process cleaning

References

SeaSide Industry Park
Rauma Marine Construction Oy
Rauma Satama

SERMATECH

G R O U P

Company name Sermatech Automation
Address Valtakatu 15
26100 Rauma
Tel. +358 2 531 1900
Web www.sermatech.fi
Founded 1990
Revenue 4,3 M€
Employees 30
Contact Juha Palmen
Toimitusjohtaja
+358 400 592303
juha.palmen@sermatech.fi
Joel Torkkeli
Automation Group Manager
+358 40 7675636
joel.torkkeli@sermatech.fi



Sermatech Automation

Part of Sermatech Group, which was established in 1976 and has worked since as a dynamic solution provider for industry. Our offices are located at Rauma and Raisio in Finland. The number of personnel is 30. The turnover for 2017 is 4,3 M€.

Areas of core competence

Our scope of supply includes project deliveries and services. Project deliveries include E&A and R&D projects for industry. Typical E&A project includes electrical design and instrumentation, automation design (SW), cabinet manufacturing, electrical installation and commissioning, integration to customers host system, training, project management and documentation. We also supply design, manufacturing, commissioning, training, consulting and maintenance services. We have a strong knowledge in robot, PLC, PC and machine vision systems. Sermatech Automation Oy provides all this as in-house service.

References

Hovercraft Tuuli IAS system
Ferry road IAS system
Synchronization scheme of generators
STX, Rolls Royce, Steerprop, ABB, Kongsberg



Company name Steerprop Oy
Address Hakunintie 23
 26100 Rauma
Tel. +358 2 8387 7900
Web www.steerprop.com
Founded 2000
Revenue 16 M€
Employees 50
Contact Mika Koli
 Sales Director
 +358 44 750 1130
 mika.koli@steerprop.com



Steerprop Oy

Steerprop was established in 2000 by personnel with decades of experience with azimuth propulsion to meet growing demands of maritime industry. Combining efficiency with ecology, our mission is to provide solutions for future proof vessels even in the most demanding environments.

Areas of core competence

Steerprop specializes in the design and production of azimuth propulsors for demanding applications. Since 2000, we have delivered more than 750 propulsors to vessels working in the arctic, offshore and cruise industries. Our solid track record of references includes 85 ice-class units and deliveries to 8 icebreakers.

References

Icebreaking oil recovery vessel Baltika, 3 x SP 60 PULL ARC
 Expedition mega yacht Celebrity Flora, 2 x SP 20 CRP
 IMR vessel Seven Viking, 3 x SP 35 CRP
 Icebreaker Vladivostok, 2 x SP 110 PULL ARC
 ROV Survey Vessel Edda Fonn, 2 x SP 35 CRP

TEJARA OY

Company name Telakka ja Rakennustyöt Tejara oy
Address Valajantie 5-7
 26100 Rauma
Tel. +358400740205
Web www.tejara.fi
Founded 1987
Revenue 15 M€
Employees 90
Contact Petri Rantanen
 Toimitusjohtaja
 +358400740205
 petri.rantanen@tejara.fi



Telakka ja Rakennustyöt Tejara oy

Tejara Oy was founded in 1987. The company serves mainly shipyards and shipowners. We supply prefabricated products and entire prefabricated areas for shipyards and shipowners as turnkey deliveries. Tejara designs and manufactures its products at three locations: Rauma, Ithode and Uusikaupunki. The company focuses on the technical areas of ships and also on furnished areas and floors.

Areas of core competence

Turnkey deliveries for shipyards. Prefabrication of pipeline systems, modules and structural units, manufacture of steel parts. Furnishings, floating floors, etc.

References

Meyer Turku: Mein Schiff series: engine shafts, HD rooms, thruster rooms
 Meyer Turku: turnkey furnishing deliveries
 Archtec Helsinki Engine rooms and engine shafts for icebreakers
 Rauma shipyard, Tallink series: engine shafts and other machinery areas
 Oasis class: delivery of telescopic funnels to Turku (Finland) and France
 Ship repairs for Turku Repair Yard and shipowners
 Arctia shipping: floor works for icebreakers
 Prefabrication of pipeline systems and steel products
 Cinderella: installation of catalysators
 Installation of scrubbers for new vessels

TELESILTA OY

Company name Telesilta Oy
Address Suojantie 5
26100 Rauma
Tel. +358 2 848 5500
Web www.telesilta.fi
Founded 1978
Revenue 8 M€
Employees 30
Contact Jarkko Myllyniemi
Rauma Site Manager
+358 40 575 6393
jarkko.myllyniemi@harjuelekter.com
Kari Laulajainen
Managing Director
+358 400 284 123
kari.laulajainen@harjuelekter.com



Telesilta Oy

Telesilta is an electrical contracting company established in 1978 and part of Harju Elekter Group. Our special expertise is in the shipping industry electrification works from design to installation, commissioning and maintenance. In addition, we offer electrification works for industrial real estate and other demanding buildings, including installation, repair and maintenance services.

We have carried out a number of significant projects over the years, and as a result we have gained a reputation, both in our native Finland and abroad, for a high level of professionalism and comprehensive services. We employ around 30 highly experienced staff, most of whom are qualified electricians.

Areas of core competence

Electrical turnkey deliveries for ship industry
Electrical deliveries & installations for land industry
Engineering & Design
Commissioning & Start-up
Repair, Maintenance & Modernization

References

M/S Hammershus Main Electrical Contractor
R/V Aranda Overhaul Main Electrical Contractor
MSV Nordica & Fennica Electrical Maintenance Works
Älveli, Älvfrida & Elvy Shuttle Ferries Main Electrical Contractor
OSRV Louhi Main Electrical Contractor
Pansio Class Electrical MLU
Hylje Class Electrical MLU
Main Electrical Contractor for Variety of Workboats
Electrical Contracting: Valmet Automotive, Yara, Vahterus etc.

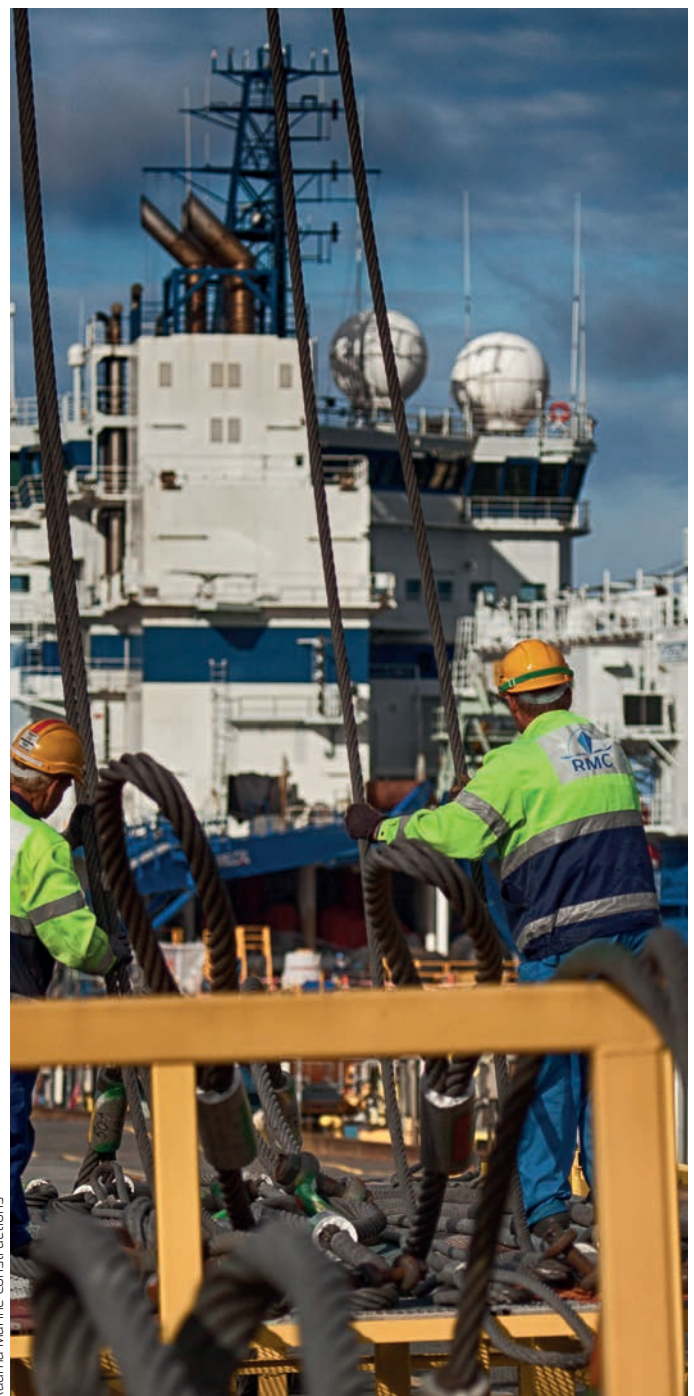


MARITIME TRANSPORT

SHIPPING INDUSTRIES, SHIPPING COMPANIES,
SHIP CATERING, CLEARANCE, CLASSIFICATION



Rauma Marine Constructions



Rauma Marine Constructions



Company name Ab Me Group Oy
Address Anderssonintie 4
26100 Rauma
Tel. +358 2 273 0580
Fax +358 2 822 1433
Web www.megroup.fi
Founded 1945
Revenue 170 MEUR
Employees 115
Contact Antti Jokela
Sales
+358 40 167 6913
antti.jokela@megroup.fi
Tommi Kokkala
Sales
+358 40 559 7510
tommi.kokkala@megroup.fi



Foreign subsidiaries:
Ab Me Group Oy Ltd Finland Filial Sverige
Stockholm Sweden; ME Group Baltics Oü
Tallinn Estonia

Ab Me Group Oy

We are one of the biggest providers of Duty Paid, Tax Free and Provisions services in the Baltic Sea area where we handle all logistics, storage and delivery services for our international partners. Through experience, professionalism and continuous improvement of our range of services we guarantee our partners and customers a quality service that runs smoothly.

Areas of core competence

ME Group provides a variety of food and ships chandlery articles and delivery services to clients. We are able to supply all pantry, deck and engine equipment and spare parts either from stock or on request. Our wide clientele includes cargo ships, cruise passenger ships, airports, embassies in Finland and abroad and Finnish peace keeping forces.

Tax Free operations provide all the logistical services needed to deliver alcohol, tobacco products, sweets, cosmetics and perfumes from the producer to the client.

Duty Paid operations include the import, storage, delivery and other logistics services related to alcoholic beverages for the Finnish and Swedish market.

References

Arctia Shipping
ESL Shipping
Finnlines
Godby Shipping
Langh Ship
Neste Shipping
Spliethoff
Tallink Silja
Wasa Line



Company name Alfons Håkans
Address Suojantie 1b
26100 Rauma
Tel. +358 400 722 803
Web www.alfonshakans.fi
Founded 1945
Revenue 19 milj. €
Employees 130
Contact Tuomas Jokela
District Manager Rauma
+358 400 722 803
tuomas.jokela@alfonshakans.fi



Alfons Håkans

Alfons Håkans has been the most trusted harbor towage company in Finland since 1945. Currently Alfons Håkans' fleet consists of more than 40 modern tugs and provides safe and efficient year around towage for all vessels and in all situations in Finnish and Estonian ports. Alfons Håkans' services are available even in Latvia via PKL Flote, a Latvian tugboat company part of Alfons Håkans group.

Areas of core competence

Alfons Håkans' harbor tugs are based in all major Finnish ports from Pori to the port of Hamina. A large local fleet also provides year around redundancy of both tugs and manning to assure service even in the most special circumstances.

Alfons Håkans' tugs are contracted by the harbor authorities in various ports to keep the berths clear from ice when ships enter or leave the ports. Additionally, Alfons Håkans and its subsidiary Finntugs Ltd have a contract with the Finnish and Swedish governments to assist in icebreaking thus securing winter navigation for merchant shipping.

Alfons Håkans is also a member of the International Salvage Union and has performed over 30 salvage cases in the last ten years.

References

GAC
Euroports Finland
Rauma Marine Constructions
Port of Rauma
Finnlines



Company name Arctia Ltd.
Address Laivastokatu 9
 00160 Helsinki
Tel. +358 30 620 7000
Fax +358 30 620 7030
Web <http://arctia.fi/en>
Founded 2009
Revenue 50,9 milj. €
Employees 500
Contact Tom Ekegren
 SVP, Icebreaking
 +358 46 876 7106
tom.ekegren@arctia.fi
 Eija Koli
 Communications Manager
 +358 40 725 3911
eija.koli@arctia.fi



Arctia Ltd.

Arctia Ltd. is a state-owned Finnish company, that provides extensive services in challenging conditions in ports, sea areas and inland waterways both in Finland and overseas. We specialize in icebreaking and ice-management as well as marine surveys and marine infrastructure management. Our services also include pipeline and cable laying, towing and harbor icebreaking, design and maintenance of waterways, canal use and maintenance, hydrographic surveying, oil spill response, hydraulic engineering, and the manufacture of buoys and polyethylene navigational aids. The company owns and operates a fleet of eight versatile icebreakers and seven survey vessels in addition to smaller fairway maintenance vessels. Part of the fleet is also capable and ready for oil recovery.

Areas of core competence

The principal task of Arctia is to ensure the smooth flow of winter navigation so as to enable the daily work of Finnish industry and citizens to proceed without disruptions caused by ice conditions. Arctia's icebreakers operate in the Bay of Bothnia and elsewhere in the Baltic Sea when required by weather conditions, ensuring reliable sea connections. Arctia's icebreaking services include assisting vessels as well as route planning and related traffic control services. Icebreakers ensure the safety of winter navigation and assist merchant vessels by opening lanes, towing ships and dislodging vessels from ice.

References

Baltic Sea icebreaking
 Northern Sea Route 2012, 2013
 Northwest Passage 2015
 Shell, Chukchi Sea
 TGS, offshore Greenland



Company name Finnish Sea Service Oy
Address Holmingintie 4
 26100 Rauma
Tel. +358500226524
Web www.finnishseaservice.fi
Founded 1985
Revenue 2 milj. €
Employees 8
Contact Jouko Kiiski
 Chairman of the Board
 +358500226524
jouko.kiiski@finnishseaservice.fi



Finnish Sea Service Oy

Finnish Sea Service Ltd has over 30 yrs of extensive experience in marine industry, has a wide network of partners to assist with challenges both at sea and underwater.

The company is ready to service 24 hrs a day and has good reputation of working reliably and professionally. Our personnel consists of true professionals going through regular training for being able to cope with the demanding working conditions. The well-maintained fleet is fully equipped with the latest technology.

Areas of core competence

Special cargo transport, towing, diving services, offshore operations, salvage and rescue, oil spill recovery, seamanworks, cable laying, maintenance work, towing master and consulting, underwater engineering.

References

Suomen Hyötytuuli Oy
 Fingrid Oyj
 Teollisuuden Voima Oyj
 Areva NP
 Rauma Marine Constructions Oy



Company name Gac Finland Oy
Address Huolintakatu 5
20200 Turku
Tel. +358 10 545 8840
Web www.gac.com/finland
Founded 1956
Revenue 1.100.000 eur
Employees 10
Contact Kai Westerholm
Regional manager
+358-50-4387866
Kai.Westerholm@gac.com

Foreign subsidiaries:
GAC Finland Oy is a part of global GAC corporation.

Gac Finland Oy

Ship agency services at all Finnish ports.

Areas of core competence

Ship agency.



Company name Rauma Cata Oy
Address Lounaisväylä 3
26820 Rauma
Tel. +358 2 8227 900
Web www.raumacata.fi
Founded 1998
Revenue 6500000,00 eur
Employees 60
Contact Seija Norrgård
Chairman of the Board
+358 44 553 0645
seija@raumacata.fi
Hannu Norrgård
CEO
+358 44 556 4452
hannu@raumacata.fi



Rauma Cata Oy

Safe sea transport requires expertise in loading, sea fastening, routing and equipment. Rauma Cata has over 20 years' experience on towage and sea transport specially in Baltic and North Sea areas.

Flexible and cost-effective transports and towage solutions are provided to clients with our deck cargo vessel, nine tugboats and barges.

Our clients design requirements are supported by our engineering team in QHSE, towage plans, sea fastening and loading plans.

Areas of core competence

Over sized project shipment with our deck cargo vessel and barges.

Towage- and emergency towage services, towage of dredging equipment and other items.

Icebreaking services.

Guard and other supporting services for objects at sea.

References

Hennoy wind farm, Norway 2019
Bjerkreim Wind Farm 2019
Transport of large-scale storage tanks, 2019
Transport of coal terminal, 2019
Assistance in Kokkola fairway dredging works, 2019
Assistance in Baltic Connector gas pipeline dredging works 2018-2019
Assistance in Nigg bay dredging works, 2018
Transportation of steel constructions, bridges, ship sections etc.
Transportation of wood over the years



Company name Rauma Shipping Oy
Address Hollmingintie 4
 26100 Rauma
Tel. +358-2-8222414
Fax +358-2-8222464
Web www.raumashipping.fi
Founded 2006
Revenue 1.5ME
Employees 1
Contact Ari Ahto
 owner
 +358-2-8222414
 info@raumashipping.fi



Rauma Shipping Oy

Rauma Shipping Oy is specialized in chartering and ship's agency. The company was founded in 2006, but the owner has been working with shipping since 1981.

Areas of core competence

Chartering, operations, agency, project cargoes

References

Ronja Marin Ab, Parainen
 Avena Nordic Grain Oy, Espoo
 Kemira Oyj
 SSAB Emea Ab
 NLMK Dansteel A/S



WESMANS

Company name Rauma Survey
Address Itäkatu 8
 26100 rauma
Tel. +358505559170
Web www.wesmans.com
Founded 1895
Revenue 200000 eur
Employees 58
Contact jussi javanainen
 Survey Manager
 +358505559170
 jja@wesmnas.com
 Veli-Pekka Tuominen
 Chief surveyor
 +35844779630
 velipekka.tuominen@raumasurvey.fi



Foreign subsidiaries:
 Wesmans Scandinavia Ab; Wesmans A/S;
 P&I Scandinavia;

Rauma Survey

Wesmans is a Nordic Marine Claims Management and Survey company with offices in Finland, Sweden, Norway and Denmark. Our clients consists of Insurers, Logistics companies, Shipping companies and Manufacturers. We handle all types of claims and undertake any type of survey work within our fields of expertise.

Areas of core competence

Marine Warranty Surveys

Wesmans' highly competent marine surveyors provide first class and professional marine (warranty) surveys with particular emphasis on preventive actions and safety. The survey includes consultancy related to pre-planning, risk assessment and approval / design of sea fastening arrangements.

We make use of the latest computer programs regarding engineering and modelling in connection with the preparation of procedures for loading and discharge operations, heavy-lift, grillage, lashing and securing in addition to transport manuals including technical note based on vessel's sailing route.

Commercial claims

Wesmans provides high quality professional claims handling services to insurers and other risk carriers. Our primary focus is in logistics, transport and shipping industries. If you have received an insurance certificate with our contact details then please notify us in case of damage and we will assist you with the claims process.

Marine claims

In order to handle claims Wesmans have the unique capability to make use of in-house staff with technical, nautical and legal background.

Our marine claims team act as commercial correspondents for all leading P&I and H&M

References

Project cargo exporters: Wärtsilä, Valmet, ABB, RollsRoyce
 Shipping: Maersk, Hapag.Lloyd, CMA, Transfennica
 Freight forwarders: Martin-Bencher, UTC, Tschudi, Hacklin, Deugro,
 Correspondent for major international insurers in Nordic region
 Insurers in finnish market: Alandia, Pohjola, IF, Lähtipiola,
 Major Lloyd's agent in Nordic region



PORT OPERATIONS

PORTS, PORT OPERATORS, CARGO HANDLING EQUIPMENT





BALTIC TANK

Company name Baltic Tank
Address Matinvähe
 26100
Tel. +358207119700
Web www.baltictank.fi
Founded 1993
Revenue 13,5 MEUR
Employees 30
Contact Anne Helanto
 Regional Director
 +358400722590
 anne.helanto@baltictank.fi



Foreign subsidiaries:
 Baltic Tank AS, Estonia

Baltic Tank

Baltic Tank Oy is the largest independent family-owned tank storage operator in Finland. We have been working in the Port of Rauma for over 20 years.

We offer comprehensive storage services for bulk liquids. Our nine terminals are well situated across Finland and Estonia to serve the storage needs of the local industry as well as transit traffic to and from Russia and FSU.

Areas of core competence

We bring value to our customers' processes by offering comprehensive service that covers storage and handling of liquid chemicals or oil products as well as railway freight forwarding and custom clearance. Our diverse experience and high technical know-how are transferred to our customers as flexible, reliable service always on time 24 hours a day. Through our terminals we have storage and handling capabilities for various different types of products, from food and feed grade products into hazardous chemical and oil products.

References

UPM
 Stora Enso
 Nynas Oy
 Avestra
 Total
 Terrafame
 Kemira



Company name Oy Chemec Ab
Address Hakunintie
 26100
Tel. +358405368877
Web www.chemec.fi
Founded 1987
Employees Approximately 30
Contact Petri Ratala
 CEO
 +358405368877
 petri.ratala@chemec.fi
 Ilkka Klemola
 Myyntipäällikkö
 ilkka.klemola@chemec.fi



Oy Chemec Ab

Oy Chemec Ab is a Finnish, family owned company, found in 1987, headquartered in Espoo. Chemec has production facilities in Kemi, Oulu, Rauma and Kotka, which are mainly serving Pulp & Paper industry. Product Development is located in Raisio.

Areas of core competence

Chemec operates mainly in Pulp & Paper industry, serving both multinational- as well as local customers. Chemec is also recognized supplier for ship building industry since early 1990's with it's fire stop solution for cable penetrations. Chemec's cable penetrations are used in the largest cruise ships in the world, but also in icebreakers and other service vessels.

References

Voyager of the Seas
 Navigator of the Seas
 Mariner of the Seas
 Explorer of the Seas
 Adventurer of the Seas
 Freedom of the Seas
 Liberty of the Seas
 Independence of the Seas
 Oasis of the Seas
 Mein Schiff 2, -3, -4, -5 and -6



Company name Euroports Rauma Oy
Address Hakunintie 23
26100 Rauma
Tel. +358 2 831 21
Web www.euroports.fi
Founded 1916
Revenue 65 Meur
Employees 505
Contact Juha Vannio
Sales and Marketing Manager
+358 40 7482427
juha.vannio@euroports.fi



Euroports Rauma Oy

Euroports Finland is the leading full service port operator in Finland. Its subsidiaries are Euroports Rauma Oy and Euroports Pietarsaari Oy. Our personnel consists of approximately 700 people. We are a part of the international Euroports Group.

Areas of core competence

Euroports Rauma's line of business covers all the services required in port operations:

- Cargo handling
- warehousing
- forwarding
- shipowners' services
- transport services

KAPLAAKI OY



Company name Kaplaaki Oy
Address Holmingintie 4
26100 Rauma
Tel. +358 500 226 524
Web www.kaplaakioy.fi
Founded 1994
Revenue 1,5 milj.
Employees 6
Contact Jouko Kiiski
Chairman of the Board
+358 500 226524
jouko.kiiski@kaplaakioy.fi



Kaplaaki Oy

The nautical multi-industry company Kaplaaki Oy's main areas of expertise are the demanding lifting services at sea and comprehensive shipyard know-how. Kaplaaki Oy has two purpose-built vessels for cable laying at sea, both built by the company itself.

Kaplaaki has a large fleet of vessels: two multi-purpose vessels (Nökö, Tuikku), four tugs (Janet, Marina, Taimi, Apu), auxiliary vessel Tuikku1, and four maintenance vessels (Emma, Paukku, Roosa, Kapo).

Areas of core competence

Lifting services - Kaplaaki's lifting services, consisting of four cranes and one multi-purpose vessel, are available 24/7 both on land and at sea.
Ship design and Building - Kaplaaki has designed and built five vessels.
Dockyard services - Kaplaaki's dockyard services include everything from shipbuilding plans to fitting-out vessels. In addition to constructing new vessels, Kaplaaki performs repairs on vessels of different sizes.
Waterways maintenance - Kaplaaki performs waterways maintenance at the Vaasa and the Sea of Bothnia buoys.
Cable laying: we have two vessels for hire to be used in demanding cable laying operations at sea.

References

Pori Energia Oy
Fingrid Oy
Technip Offshore Finland Oy
Suomen Hyötytuuli Oy
Finnish Transport Agency



Company name Kuljetusliike Y. Auramaa Oy
Address Isometsäntie 42
 26100 RAUMA
Tel. +358447868700
Web www.auramaa.fi
Founded 1929
Revenue 76 000 000€
Employees 500
Contact Juho Hermikoski
 Regional Manager
 +358400124615
 juho.hermikoski@auramaa.fi
 Kalle Auramaa
 Sales and Marketing Manager
 +358400797925
 kalle.auramaa@auramaa.fi



Kuljetusliike Y. Auramaa Oy

Kuljetusliike Y. Auramaa Oy is one of the most significant Finnish transport companies, established in 1929.

We have approximately 500 employees and 250 transport units. The average age of our modern fleet is only 3,5 years, which has made possible to minimize the environmental burden caused by our operations.

Auramaa is one of the Finnish carriers who own Kaukokiito transport system, through the Kaukokiito network goods reach whole Finland overnight.

We have our own terminals and warehouses around western and southern Finland in 10 different cities and 13 locations. The head office is located in Eura.

Areas of core competence

The products transported range from bulk transports of heavy industries to temperature-regulated foodstuff transports. We also offer tailored project logistics, warehousing and other logistic services.

References

Groupage logistics through Kaukokiito network overnight
 Oversize and overweight transports for international forwarders
 Tailored warehousing solutions



Company name Logistikas Oy
Address Hakunintie 26
 26100 Rauma
Tel. +358 2 83769600
Fax +385 2 83769619
Web www.logistikas.fi
Founded 1997
Revenue 20 000 000 €
Employees 130
Contact Toni Brigatti
 CEO
 +354 44 3211469
 toni.brigatti@logistikas.fi



Logistikas Oy

Logistikas is a Finnish privately owned strategic partner for logistics, procurement and material flow. Our service concept includes warehousing, in-house logistics, inbound/outbound logistics, consultant and procurement services.

Our logistics centres are located in Rauma, Jyväskylä, Olkiluoto and Nokia. The company has currently covered warehouse space approx. 80 000 sqm. The company has been granted ISO 9001:2008 quality certification by DNV.

We can promise our clients peace of mind because their logistical functions are in our responsible hands.

Areas of core competence

Logistikas offers its clients competitive and tailor-made logistics solutions with the aim of creating a competitive edge for clients. Our solutions are the product of many years of experience and development. Our practices and information system have been developed in close collaboration with top experts and operators in the logistics world.

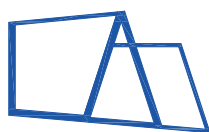
The foundation of the service concept consists of a reliable information system that is easy to integrate, our own versatile premises and a group of skilled and committed experts. Our business is based on substantial experience and we emphasize responsible practices. Our goal is to offer our clients solutions that improve the efficiency, management and reliability of the logistics chain.

We aim at open long-term partnerships, enabling us to develop logistics activities to reach optimal efficiency. Clear indicators are created for common activities in order to monitor and develop them.

We are an important part of our client's production process. We deliver the right components and component series or part assemblies to the production at exactly the right time, ready to be installed. The assemblers do not have to look for the components or retrieve them. Instead, they can focus on their assembly and installation work. We offer our clients the possibility to focus on their core business by leaving logistics in the safe hands of experts. We promise our clients peace of mind and an uninterrupted flow for components. Your logistics activities are in responsible hands with us.

References

Rauma Marine Constructions site services and shipyard logistics
 AGCO Valtra Oy warehousing and packing services
 Metsä Fibre pulp mill's spare part logistics (24/7 service)
 IKH import container handling and warehousing services
 TVO Oyj Olkiluoto nuclear power plant warehousing and site services



Lohkoasennus oy

Company name Lohkoasennus Oy
Address Suojantie 5, Halli 18-1
26100 Rauma
Tel. +358 24327327
Fax +358 24327280
Web www.lohkoasennus.fi
Founded 1975
Revenue 2.000.000 €
Employees 10 - 15
Contact Tapio Koski
CEO
+358 24327327
tapio.koski@lohkoasennus.fi



Lohkoasennus Oy

Founded in 1975, Lohkoasennus Ltd is a privately owned machining shop that delivers made to order products.

Our head office is situated in Naantali and our production facilities in the Seaside Industry Park at the Port of Rauma.

Areas of core competence

Our main business comprises the manufacture, installation and maintenance of port equipment through turnkey solutions, as well as elevating an transfer gear.

In addition, our made to order product selection includes steel and aluminium structures, such as hydraulic trapdoors and driveable glass canopies for vessels. Our quality system complies with the requirements of ISO 9001:2008 and environmental management system ISO 14001:2004 and OHSAS 18001:2007. We have certified our production in Rauma according to EN 1090-1:2009/A1:2011. The certification applies to the right to use the EN 1090-2 EX3 CE marking in the steel structures of our products. Certificate number : 0038/CPR/HEQ6015019.

References

Skyway in Nynäshamn - Sweden, 2016
Car ramp in Helsinki, 2016
Gangway in Maarianhamina, 2014
Sid car ramp in Helsinki, 2018
Sid car ramp in Helsinki, 2019

Nurminen Logistics ▶▶▶

Company name Nurminen Logistics Services Oy
Address Hakunintie 28
26100 Rauma
Tel. +358 10 545 00
Fax +358 10 545 2000
Web www.nurminenlogistics.com
Founded 1886
Revenue EUR 43 million
Employees 200
Contact Antti Koukku
Department Manager
+358 10 545 5913
antti.koukku@nurminenlogistics.com



Foreign subsidiaries:
Nurminen Maritime Latvia SIA; OOO
Nurminen Logistics; UAB Nurminen
Maritime; Nurminen Maritime Eesti AS

Nurminen Logistics Services Oy

Nurminen Logistics is a listed company established in 1886 that offers logistics services. The company provides high-quality forwarding, cargo handling and value added services as well as railway transports and related to it project transport services to its customers. The main market areas of Nurminen Logistics are Finland, Russia and its neighbouring countries.

Areas of core competence

Nurminen Logistics provides high-quality logistics services, such as railway transports, terminal services, forwarding, special and heavy transports, project logistics and value added services.

Nurminen Logistics is a highly solvent, reliable forwarding partner that is independent of any transport business. Nurminen specialises in all customs clearance services for export and import trade in Finland, whether associated with land, sea, rail, postal or air transport. Our forwarding services are import documentation, export documentation, transit documents, EU internal trade statistics (Intrastat) and agent for transport services in Finland (container haulage/ unit goods transport).

References

Teboil
Nokian Tyres
Metsä Board
Nordicon
Sandvik Mining and Construction Oy
SSAB



Company name Port of Rauma Ltd
Address Hakunintie 19
 26100 Rauma
Tel. +358 2 837 11
Fax +358 2 822 6369
Web www.portofrauma.com
Founded 2014
Revenue 12 Meur
Employees 30
Contact Hannu Asumalahti
 Managing Director
 +348 50 303 9700
 hannu.asumalahti@portofrauma.com
 Tanja Angelova
 Administrative Director
 +358 50 303 9709
 tanja.angelova@portofrauma.com



Port of Rauma Ltd

Port of Rauma Ltd is in charge of the construction and maintenance of port infrastructure, land lease and port security arrangements among other duties. The goods are mainly handled by the leading port operator Euroports Rauma (www.euroports.fi). Main commodities handled at the Port of Rauma include paper, pulp, card board, round wood, timber, china clay and grain. General Cargo in containers and trailers. Chemicals and oil products. Project cargo and high & heavy loads. The port's vessel and security services are provided by Port of Rauma Ltd's subsidiary Botnia Port Service Ltd.

Areas of core competence

Port of Rauma is the largest container port of the Finnish west coast. Rauma is also the leading paper harbour in Finland and a general cargo port with a lot of Ro-ro and sto-ro traffic. The crane fleet is excellently suited for container, break bulk, general cargo and dry & liquid bulk cargo operations. Good road connections and the versatile crane capacity makes Rauma an ideal port for project shipments. The Port of Rauma can provide lifting capacity up to 200-ton loads, which means high & heavy loads are widely handled at the port. Port of Rauma is improving its competitiveness and capacity of the port by constructing more yard area.

References

Cargo handling at port of Rauma is operated by following companies:
 Ro-ro, sto-ro, lo-lo & containers: Euroports Rauma
 Liquid Bulk: Baltic Tank, Rauma Terminal Service, Samat Nordic, Kiilto
 Dry Bulk: Euroports Rauma, Suomen Viljava, Chemec
 Container added-value services are provided by:
 Euroports Rauma, Depot Service Rauma, Arctic Container



Company name Rauma Terminal Services Oy
Address Isohakunintie
 26100 Rauma
Tel. +35828220933
Fax +3582822
Web www.telko.com
Founded 2010
Revenue 1500 - 2000 (1000€)
Employees 7
Contact Jarkko Kuusisto
 Terminal Manager
 +358400480385
 jarkko.kuusisto@telko.com



Rauma Terminal Services Oy

The heart of our Nordic Chemicals unit is the terminal in Rauma, located on the west coast of Finland. It provides all facilities needed to store bulk chemicals, repack products, produce tailor-made blends.

Areas of core competence

The Rauma terminal has 55 tanks with a total capacity of 16,000 m³, and connections by sea, railway, and road. The size of the tanks is between 30 and 2,200 m³. The terminal is equipped with a modern drumming line with a capacity of 60 drums/hour. There are four storage buildings for packed goods in the Rauma terminal area.

References



Company name Samat Nordic Oy
Address Ruokluodonkatu 2
26100 Rauma
Tel. +358406486040
Web www.haanpaa.com
Founded 1979
Revenue 34 milj.€
Employees 51
Contact Teppo Liimatta
Terminal Manager
+358406486040
teppo.liimatta@haanpaa.com
Juha Penttilä
General Manager of BU East
+358407067792
juha.penttila@haanpaa.com

Samat Nordic Oy

Samat Nordic Oy is leading liquid logistic Company in the Baltic Sea region and is owned By French family Company Samat Group. Samat Nordic provides international and domestic transports across Europe and Russia together with warehouses in Hamina and Rauma. We operate in Rauma at the Martinkari oil harbour where we have one 8,000m³ storage tank, three 5,000 m³ storage tank, and several smaller tanks of 50 300 m³ each.

Areas of core competence

Warehousing
Transportation of liquid chemicals

References

Forchem Oyj



Company name Suomen Viljava Oy
Address Ulkopetäjäs, Rauman satama
26100
Tel. +358 40 7156299
Web www.suomenviljava.fi
Founded 2002
Revenue 17 M€
Employees 60
Contact Klaus Savolainen
Silo Manager
+358 40 182 8083
klaus.savolainen@suomenviljava.fi
Pasi Lähdetie
CEO
+358 50 360 9075
pasi.lahdetie@suomenviljava.fi



Suomen Viljava Oy

The Reliable Professional in Grain Storage and Handling

Suomen Viljava is the leading Finnish company in grain logistics specializing in storage and handling. We serve, in addition to domestic market, companies operating in export, import and transit trade in and around northeastern Europe.

Suomen Viljava operates in 19 different storage locations in Finland. The silo plants of Rauma, Naantali, Helsinki, Loviisa and Kotka are situated at ports. These ports are able to serve ships year-round.

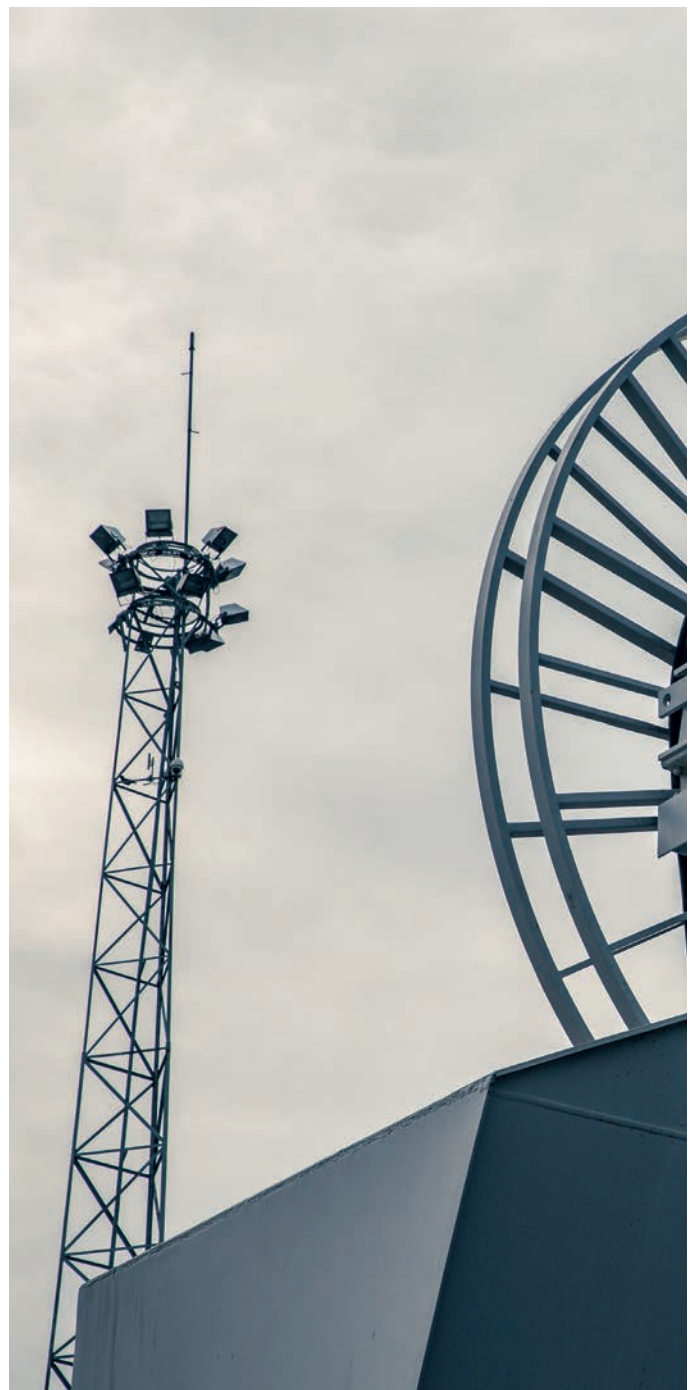
Areas of core competence

Grain handling and storage, pellet handling and storage, ship loading and discharge, flat storage rental.



PUBLIC SECTOR

PUBLIC SECTOR, TRAINING, ASSOCIATED INDUSTRIES



WINNOVA

LÄNSIRANNIKON KOULUTUS OY

Company name Länsirannikon Koulutus Oy WinNova
Address PL 197
26101 Rauma
Tel. +358 2 623 7100
Web www.winnova.fi
Founded 2009
Revenue 51 milj. €
Employees 510
Contact Kari Toivonen
Head of Training, logistics unit
+358 44 455 7957
kari.toivonen@winnova.fi
Lasse Schultz
CEO
+358 44 455 7302
lasse.schultz@winnova.fi



Länsirannikon Koulutus Oy WinNova

Länsirannikon Koulutus Oy WinNova provides basic, additional and supplementary secondary-level vocational education, apprenticeships and other vocational education.

Areas of core competence

Our key tasks include providing vocational education and developing working life. WinNova's work-oriented services combine solid competence in vocational education with extensive experience in providing training and development services for corporations and public sector workplaces.

WinNova's maritime training is done in compliance with the regulations concerning seafaring defined in STCW (Standards of Training and Certification of Watchkeeping).



Company name Rauman kaupunki / Yrityspalvelut
Address Kanalinranta 3
26100 Rauma
Tel. +358 2 834 11
Web <https://www.rauma.fi/tyo-ja-yrittaminen/yrityspalvelut/>
Founded 1442
Employees 5
Contact Heikki M. Nurmi
Business Development Specialist
+358 50 593 2658
heikki.nurmi@rauma.fi



Rauman kaupunki / Yrityspalvelut

The Entrepreneur Services of the City of Rauma provide advice for individuals planning on starting a company and for new businesses, and offer development aid for companies that are already in operation. Some entrepreneur services are also produced by our strategic partners, using the purchaser-provider model. Development projects focusing on businesses are realised either by Yrityspalvelut itself or under its supervision by its partners.

Areas of core competence

The city's own service production and the service chain formed by its partners provide advice and development services for businesses throughout their life cycle: from the business idea assessment to changing ownership. Our main services include: Providing information and advice to individuals planning to start or starting a company and to new companies; Developing companies that are already operating; Providing services to businesses basing themselves in the area; Promoting entrepreneurship. Through our expert network we also have access to local business expertise that we can use when providing advice and development aid.

References

Rauma subproject of Turku Seas 2020
Rauma Maritime Cluster Catalogue
Marine cluster development activities

Seaside Industry Park Rauma

Company name Rauman Meriteollisuuskiinteistöt Oy
Address Suojantie 5
 26100 Rauma
Tel. +358405501942
Web www.seasideindustry.com
Founded 2014
Revenue 5 400 000 €
Employees 4
Contact Timo Luukkonen
 CEO
 +358405501942
 timo.luukkonen@seasideindustry.com
 Saara Haaslahti
 Development Coordinator
 +358407305487
 saara.haaslahti@seasideindustry.com



Rauman Meriteollisuuskiinteistöt Oy

Rauman Meriteollisuuskiinteistöt Oy (RMTK) manages, coordinates and develops the Seaside Industry Park Rauma concept. Seaside Industry Park is the hub of the maritime cluster in Rauma. Successful principal companies in shipbuilding and marine production with wide and efficient supplier network operate in the park. The region is utilizing versatile infrastructure and comprehensive common services. Seaside Industry Park offers an efficient manufacturing environment and cooperation network.

Areas of core competence

RMTK's role with the Seaside industry Park is to manage, coordinate and develop the park's operations through performing the following key tasks:

- 1) Defining the ground rules/modes of operation for Seaside
- 2) Being in charge of the development of the Seaside concept
- 3) Initiating the internal cooperation model for Seaside and being in charge of its performance
- 4) Renting out retail properties and equipment at Seaside
- 5) Maintaining and developing Seaside's facilities and equipment
- 6) Maintaining and developing Seaside's concentrated services
- 7) Sharing in the responsibility of marketing Seaside
- 8) Being in charge of the general security of the facilities and making sure the operations are carried out in compliance with the environmental permit

References

Kongsberg Maritime Finland
 Steerprop
 Rauma Marine Constructions
 Ermail
 Logistikas



Company name Satakunta University of Applied Sciences
Address Satamakatu 26
 26101 Rauma
Tel. +358 2 623 4800
Web www.samk.fi
Founded 1993
Revenue 35M€
Employees 400
Contact Cimmo Nurmi
 Vice President
 +358 44 710 3371
 cimmo.nurmi@samk.fi
 Jaana Vase
 Director
 +358 44 710 3502
 jaana.vase@samk.fi



Satakunta University of Applied Sciences

SAMK is the leading institution of higher education in the Satakunta region and it operates on the west coast of Finland. SAMK is an internationally oriented university offering education for the young and adults. SAMK provides about 30 degree programs in Finnish and 10 in English at both Bachelor and Master levels. SAMK has close contacts with the employment market both nationally and internationally. The faculties are: Welfare and Health, Service Business, Logistics and Maritime Technology and Technology.

Areas of core competence

Research Teams:

Artificial Intelligence
 Robotics and Automation Technology
 Well-Being Enhancing Technology
 Logistics
 Smart Energy Solutions
 Smart Urban Business
 Indoor Environment
 Tourism Business
 Accessibility
 Enhancing the Functioning of the Work Force
 Mental Health
 Services for the Ageing

<https://www.samk.fi/en/research-and-cooperation/>

References

SAMK cooperates with more than 500 companies per year
 SAMK has about 100 externally funded projects ongoing each year
 More than 30% of SAMK's project volume is international



UNIVERSITY OF TURKU

Centre for Maritime
Studies

Company name University of Turku, Brahea Centre,
Centre for Maritime Studies (CMS)
Address Satamakatu 22 C
26100 Rauma
Tel. + 358 40 779 9493
Web <http://www.utu.fi/cms>
Founded 1980
Revenue 260 930 978,22 €
(2018, University of Turku)
Employees CMS Rauma office: 4 persons
Contact Sari Nyroos
Education Manager
+358 40 779 9493
sari.nyroos@utu.fi
Anne E. Suominen
Senior Training Manager
+358 40 779 9494
anelu@utu.fi



University of Turku, Brahea Centre, Centre for Maritime Studies (CMS)

The Centre for Maritime Studies (CMS) focuses on maritime related research, education and development projects. CMS specializes in the fields of maritime traffic, logistic chains and infrastructure, and port operations. We offer research services, further education and conferences. We provide continuing education for the specific needs of the maritime field, and lead and participate in a wide range of international projects for developing maritime education and learning materials.

Areas of core competence

Competence areas:

- Shipping, Ports and Maritime Logistics
- Maritime Cluster
- Maritime Safety & Security
- Marine Environment
- Sustainable Development of Marine Areas and Coastal Regions

Activities:

- Scientific research
- Research and expert services
- Further education and seminars
- Open and tailor-made courses and training programmes
- Research and development projects
- Production of learning materials
- Promotion of networking

References

ChemSAR – Operational Plans and Procedures for SAR project
SataDiLogis project
GET READY project
Learning materials on cargo securing (blogit.utu.fi/cargosecuring)
Learning materials on Maritime English (MarEng, MarEng+)
Studia Maritima lectures
Basics of shipping and port operations -education
Transport liability -education
ISPS PSO -education



Catalogue of the
Rauma Maritime Cluster businesses
2019 New edition